



REPUBLIC OF KENYA  
 MINISTRY OF ENVIRONMENT & FORESTRY  
 KENYA METEOROLOGICAL DEPARTMENT

Dagoretti Corner, Ngong Road, P. O. Box 30259-00100, GPO, Nairobi, Kenya

Telephone: +254 (0) 20 38567880-7, +254 724 255 153-4

E-mail: director@meteo.go.ke, info@meteo.go.ke Website: http://www.meteo.go.ke

Our Ref: MET/7/135

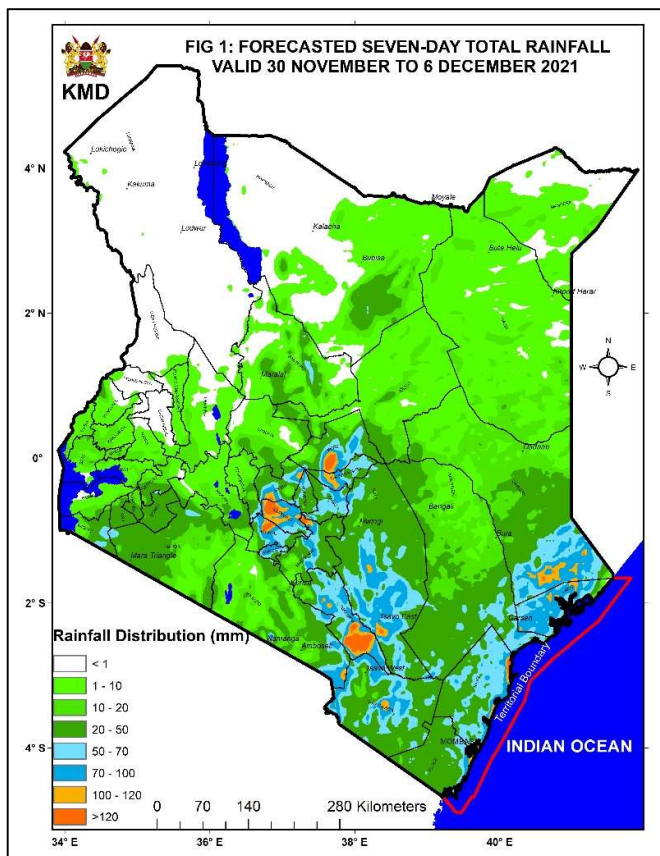
Issue date: 29 November 2021

**SEVEN-DAY WEATHER FORECAST VALID FROM 30 NOVEMBER-6 DECEMBER 2021**

**HIGHLIGHTS**

Forecast for 30 November-6 December 2021	Weather Review for 22-28 November 2021
<ul style="list-style-type: none"> <li>Rainfall is expected to continue over several parts of the country including the Highlands East of the Rift Valley, the South-eastern lowlands, and the Coast. However, rainfall intensities are likely to reduce as the forecast period progresses.</li> <li>Strong south-easterly winds with speeds exceeding 25 knots (12.9 m/s) are expected over some parts of North-western and North-eastern Kenya.</li> </ul>	<ul style="list-style-type: none"> <li>Rainfall was recorded over most parts of the country. Intense storms occurred over some parts of the Highlands East of the Rift Valley, the South-eastern lowlands and the Coast.</li> <li>Both day-time (maximum) temperatures and night-time (minimum) temperatures increased over some stations and decreased over others.</li> </ul>

**1 FORECAST FOR 30 NOVEMBER-6 DECEMBER 2021**



Rainfall is expected to continue over several parts of the country including the Highlands East of the Rift Valley, the South-eastern lowlands, and the Coast as depicted by **Figure 1**. However, rainfall intensities are likely to reduce as the forecast period progresses.

Strong south-easterly winds with speeds exceeding 25 knots (12.9 m/s) are expected over some parts of North-western and North-eastern Kenya.

## 1.1 DETAILED REGIONAL FORECAST FOR 30 NOVEMBER-6 DECEMBER 2021

### 1.1.1 The Highlands West of the Rift Valley, the Lake Victoria Basin and the Central and South Rift Valley (*Kisii, Nyamira, Trans-Nzoia, Uasin-Gishu, Elgeyo-Marakwet, Nandi, Kericho, Bomet, Kakamega, Vihiga, Bungoma, West-Pokot, Siaya, Kisumu, Homabay, Busia, Migori, Baringo, Nakuru, Narok and Laikipia Counties*):

Mornings are likely to be generally sunny. Afternoon showers and thunderstorms are expected over few to several places. Nights are likely to be mainly partly cloudy.

Maximum (day-time) temperatures are likely to range from 21°C to 32°C while minimum (night-time) temperatures are expected to be between 08°C and 21°C.

### 1.1.2 North-western Kenya (*Turkana and Samburu Counties*):

Days are expected to be generally sunny and nights partly cloudy. However, there is a possibility of occasional showers occurring over few places.

Maximum (day-time) temperatures are likely to range from 24°C to 38°C while minimum (night-time) temperatures are expected to be between 10°C and 27°C.

### 1.1.3 The Highlands East of the Rift Valley (including Nairobi County) (*Nyandarua, Nyeri, Kirinyaga, Murang'a, Kiambu, Meru, Embu, Tharaka-Nithi and Nairobi Counties*):

Mornings are likely to be cloudy with occasional rains over few places. Afternoon and night showers are likely to occur over few to several places.

Maximum (day-time) temperatures are likely to range from 20°C to 29°C while minimum (night-time) temperatures are expected to be between 06°C and 17°C.

### 1.1.4 North-eastern Kenya (*Marsabit, Mandera, Wajir, Garissa and Isiolo Counties*):

Days are expected to be generally sunny and nights partly cloudy. However, morning rains as well as afternoon and night showers are likely to occur over few places during the first half of the forecast period.

Maximum (day-time) temperatures are likely to range from 23°C to 38°C while minimum (night-time) temperatures are expected to be between 16°C and 25°C.

### 1.1.5 The South-eastern lowlands (*Machakos, Kitui, Makueni, Kajiado and Taita-Taveta Counties*):

Morning rains are likely to occur over few places. Afternoon and night showers are likely to occur over few to several places.

Maximum (day-time) temperatures are likely to range from 22°C to 36°C while minimum (night-time) temperatures are expected to be between 12°C and 23°C.

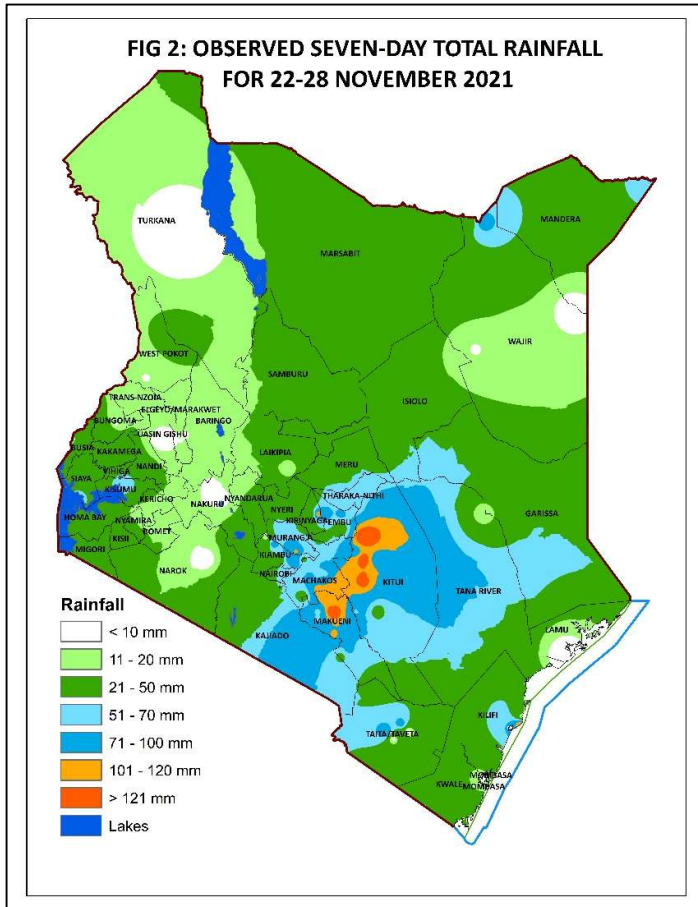
### 1.1.6 The Coast (*Mombasa, Tana-River, Kilifi, Lamu and Kwale Counties*):

Morning, afternoon and night showers are likely to occur over few places during the first half of the forecast period. The second half of the forecast period is likely to be generally dry.

Maximum (day-time) temperatures are likely to range from 31°C to 34°C while minimum (night-time) temperatures are expected to be between 23°C and 27°C.

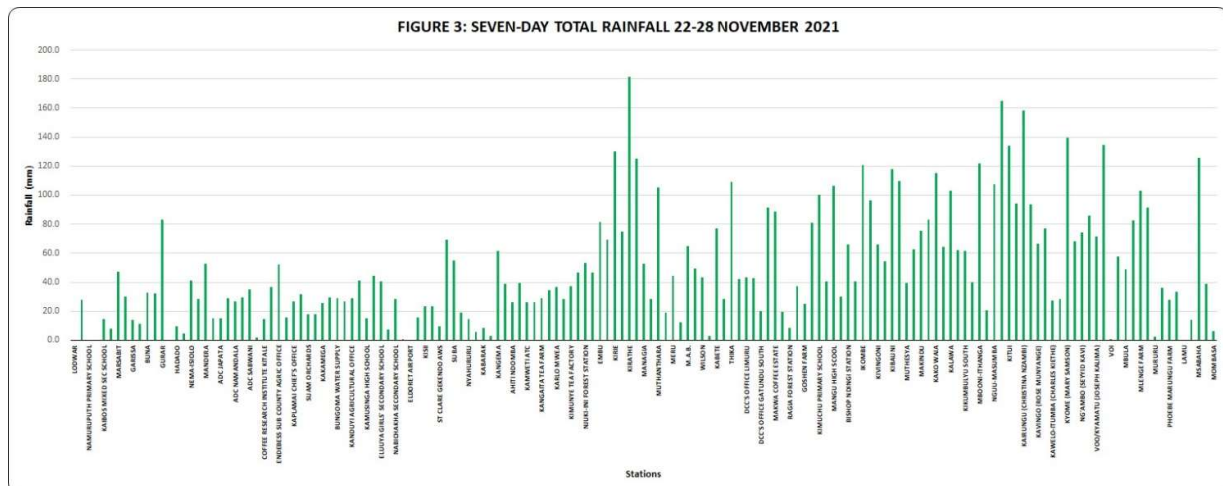
## 1.2 WEATHER REVIEW FOR 22-28 NOVEMBER 2021

### 1.2.1 Rainfall Review



Rainfall was recorded over most parts of the country. Intense storms occurred over some parts of the Highlands East of the Rift Valley, the South-eastern lowlands and the Coast as depicted by Figures 2 & 3.

A comparison between the previous review period (15-21 November 2021) and the current review period (22-28 November 2021) indicates an increase in rainfall amounts over most parts of the country.



The highest seven-day rainfall total (181.3mm) was recorded at Kirathe Rainfall Station in Embu County. Other stations that recorded significant rainfall totals during the review period are shown in **Table 1**.

STATION	COUNTY	SEVEN-DAY TOTAL RAINFALL (mm)
WOTE (MALIVANI) RAINFALL STATION	MAKUENI	165.0
KAIRUNGU RAINFALL STATION	KITUI	158.0
KYOME RAINFALL STATION	KITUI	139.5
WENGENI RAINFALL STATION	KITUI	134.4
KITUI METEOROLOGICAL STATION	KITUI	134.0
KIRIE RAINFALL STATION	EMBU	130.0
MSABAHA METEOROLOGICAL STATION	KILIFI	125.4
MAYORI RAINFALL STATION	EMBU	125.1
MBOONI-ITHANGA RAINFALL STATION	MAKUENI	121.6
IKOMBE RAINFALL STATION	MACHAKOS	120.5

Wote (Malivani) Rainfall Station in Makueni County recorded the highest amount of rainfall within 24-hours: 154.5mm on 27 November 2021. Other stations that recorded very heavy rainfall (more than 50mm within 24 hours) are shown in **Table 2**.

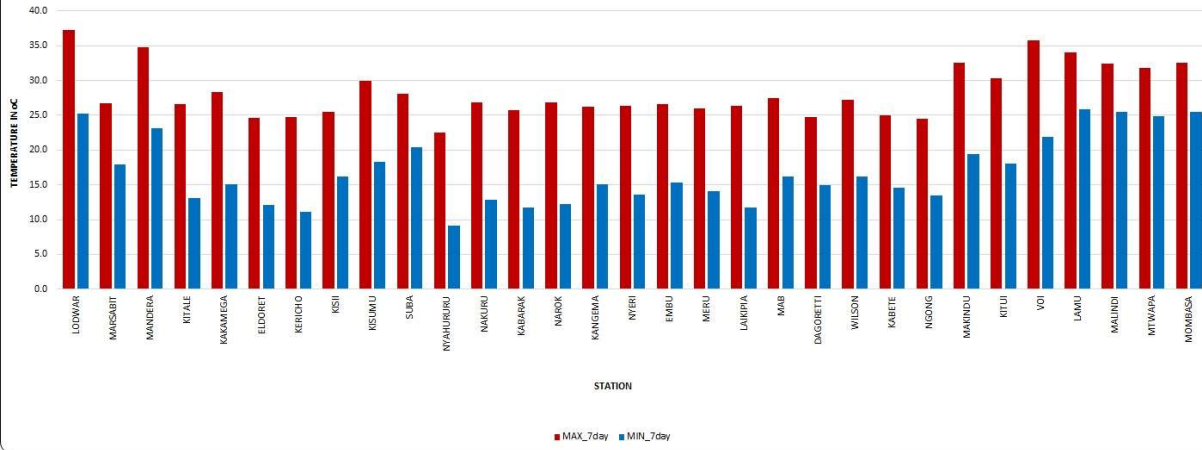
STATION	COUNTY	AMOUNT (mm)	DATE
KIRATHE RAINFALL STATION	EMBU	120.0	27 November 2021
MAYORI RAINFALL STATION	EMBU	108.9	27 November 2021
KAKO WAIA RAINFALL STATION	MAKUENI	98.4	27 November 2021
MSABAHA METEOROLOGICAL STATION	KILIFI	88.9	27 November 2021
KALAWA RAINFALL STATION	MAKUENI	88.7	27 November 2021
KIRIE RAINFALL STATION	EMBU	85.0	27 November 2021
MBOONI-ITHANGA RAINFALL STATION	MAKUENI	84.8	28 November 2021
THIKA METEOROLOGICAL STATION	KIAMBU	82.5	27 November 2021
KIBAUNI RAINFALL STATION	MACHAKOS	81.4	27 November 2021
WENGENI RAINFALL STATION	KITUI	78.6	28 November 2021

### 1.2.2 Temperature Review

Comparing the previous review period (15-21 November 2021) to the current review period (22-28 November 2021), it is noted that day-time (maximum) temperatures increased over some stations including Kangema, Malindi and Nakuru and decreased over others including Mandera, Kisii and Kisumu. Night-time (minimum) temperatures also increased over some stations including Narok, Nakuru and Kabarak and decreased over others including Mandera, Kitui and Dagoretti.

Lodwar Meteorological Station recorded the highest daily maximum temperature: 38.7°C on 25 November 2021 while Nyahururu Meteorological Station recorded the lowest daily minimum temperature: 6.3°C on 24 November 2021. The same stations recorded the highest seven-day average maximum temperatures and the lowest seven-day average minimum temperatures: 37.2°C and 9.2°C respectively. (See **Figure 4**).

FIGURE 4: SEVEN - DAY MAXIMUM & MINIMUM TEMPERATURES FOR 22-28 NOVEMBER 2021



***N.B: This forecast should be used in conjunction with the daily (24-hour) and five-day forecasts issued by this Department. County specific forecasts are available from the offices of respective County Directors of Meteorology.***

**KEY OF SCIENTIFIC WORDS USED**

<i>Rainfall categories</i>	
<i>Range</i>	<i>Category</i>
<5mm	Light
5-20mm	Moderate
20-50mm	Heavy
>50mm	Very heavy

<i>Rainfall coverage</i>	
<i>Term</i>	<i>Meaning</i>
Most places	Between 66% and 100%
Several places	Between 33% and 66%
Few places	Less than 33%

Stella Aura, MBS  
**DIRECTOR, KENYA METEOROLOGICAL DEPARTMENT**