



REPUBLIC OF KENYA
MINISTRY OF ENVIRONMENT, CLIMATE CHANGE & FORESTRY
KENYA METEOROLOGICAL DEPARTMENT

Dagoretti Corner, Ngong Road, P. O. Box 30259-00100, GPO, Nairobi, Kenya

Telephone: +254 (0) 20 38567880-7, +254 724 255 153-4

E-mail: director@meteo.go.ke, info@meteo.go.ke Website: <https://www.meteo.go.ke>

Our Ref: MET/7/284

Issue date: 11 November 2024

SEVEN-DAY WEATHER FORECAST VALID 12 TO 18 NOVEMBER 2024

HIGHLIGHTS

Forecast for 12 to 18 November 2024

- Rainfall is expected to continue over the Highlands East and West of the Rift Valley, the Lake Victoria Basin, the Rift Valley, the South-eastern lowlands, the Coast and North-eastern Kenya. Isolated heavy rainfall events may occur over some parts of these regions.

Weather Review for 4 to 10 November 2024

- Rainfall was recorded in most parts of the country.
- Day-time (maximum) temperatures decreased over much of the country with only a few coastal stations recording marginal warming.
- Night-time (minimum) temperatures increased over most parts of the country though a few stations including Lodwar, Kitale and Kabete recorded slight cooling.

1 FORECAST FOR 12 TO 18 NOVEMBER 2024

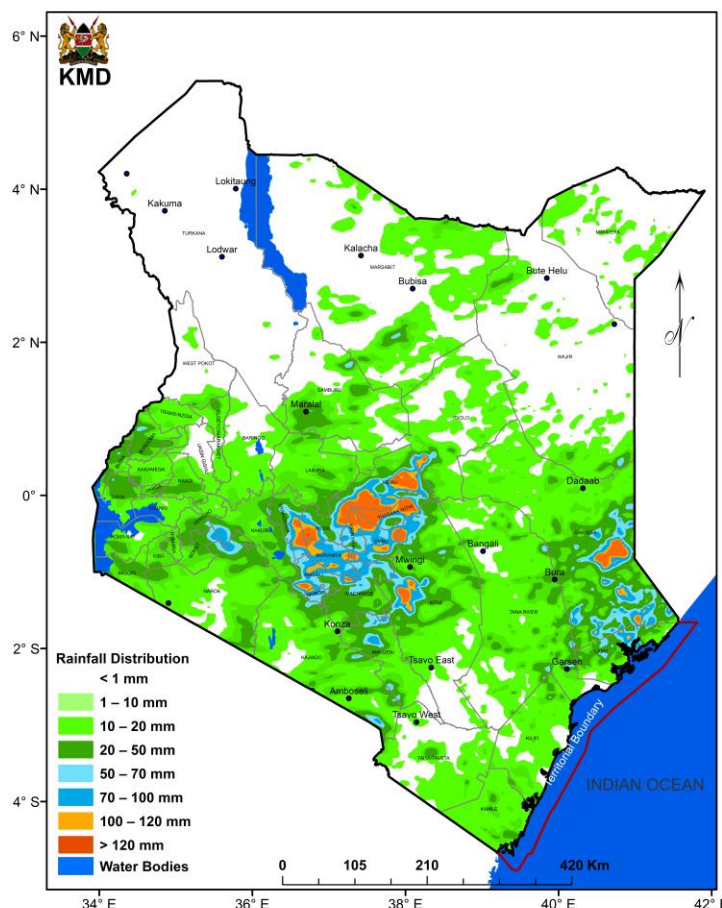
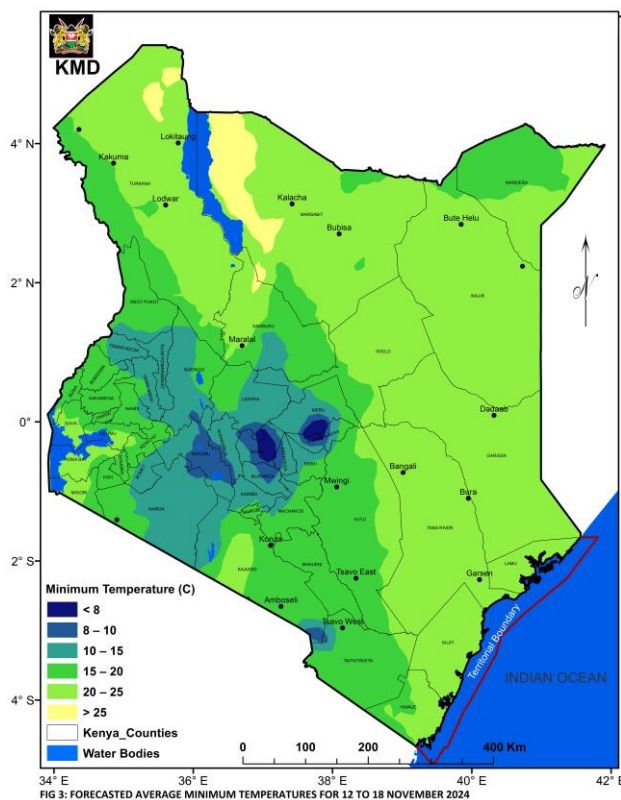
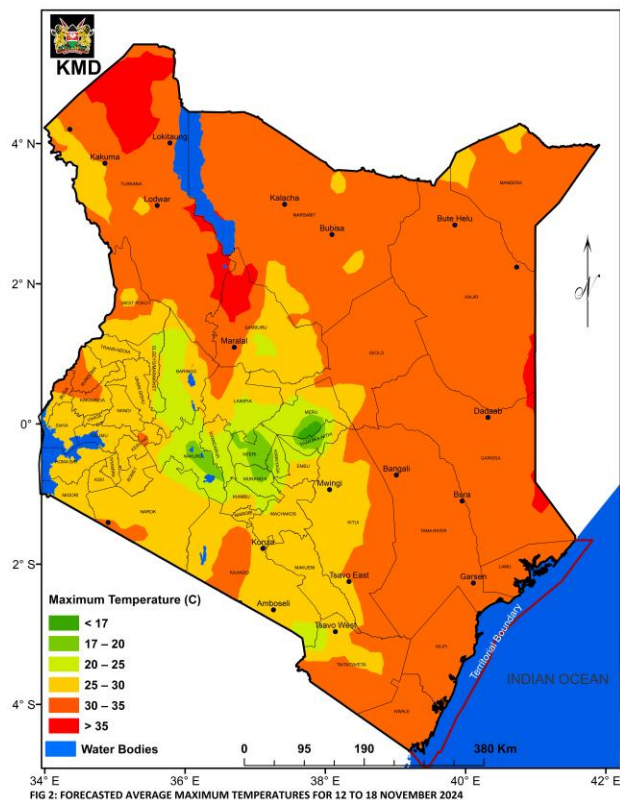


FIG 1: FORECASTED SEVEN-DAY TOTAL RAINFALL FOR 12 TO 18 NOVEMBER 2024

Rainfall is expected to continue over the Highlands East and West of the Rift Valley, the Lake Victoria Basin, the Rift Valley, the South-eastern lowlands, the Coast and North-eastern Kenya as shown in **Figure 1**. Isolated heavy rainfall events may occur over some parts of these regions.

Average daytime (maximum) temperatures of more than 30°C will be experienced in the Coast, North-eastern and North-western Kenya as shown in **Figure 2**.

Average night-time (minimum) temperatures will be less than 10°C over some parts of the Highlands East of the Rift Valley, the Central Rift Valley and the South-eastern lowlands as shown in **Figure 3**.



1.1 DETAILED REGIONAL RAINFALL FORECAST FOR 12 TO 18 NOVEMBER 2024

1.1.1 The Highlands West of the Rift Valley, the Lake Victoria Basin and the Rift Valley (Kisii, Nyamira, Nandi, Kericho, Bomet, Kakamega, Vihiga, Bungoma, Siaya, Kisumu, Homabay, Busia, Migori, Narok, Baringo, Nakuru, Trans-Nzoia, Uasin-Gishu, Elgeyo-Marakwet and West-Pokot Counties):

Sunny intervals are expected in the mornings though light rains may occur over few places. Afternoon and night showers and thunderstorms are expected over few places occasionally spreading to several places.

1.1.2 North-western Kenya (Turkana and Samburu Counties):

Sunny intervals are expected during the day while nights are likely to be partly cloudy. However, occasional morning rains and afternoon and night showers may occur over few places.

1.1.3 The Highlands East of the Rift Valley (including Nairobi County) (Nyandarua, Laikipia, Nyeri, Kirinyaga, Murang'a, Kiambu, Meru, Embu, Tharaka-Nithi and Nairobi Counties):

Morning rains are expected over few places. Afternoon and night showers are likely to occur over few places occasionally spreading to several places.

1.1.4 North-eastern Kenya (Marsabit, Mandera, Wajir, Garissa and Isiolo Counties):

Morning rains as well as afternoon and night showers are expected over few places.

1.1.5 The South-eastern lowlands (Machakos, Kitui, Makueni, Kajiado and Taita-Taveta Counties as well as the inland parts of Tana-River County):

Morning rains as well as afternoon and night showers are expected over few places.

1.1.6 The Coast (Mombasa, Kilifi, Lamu and Kwale Counties as well as the coastal parts of Tana-River County):

Morning, afternoon and night showers are expected over few places.

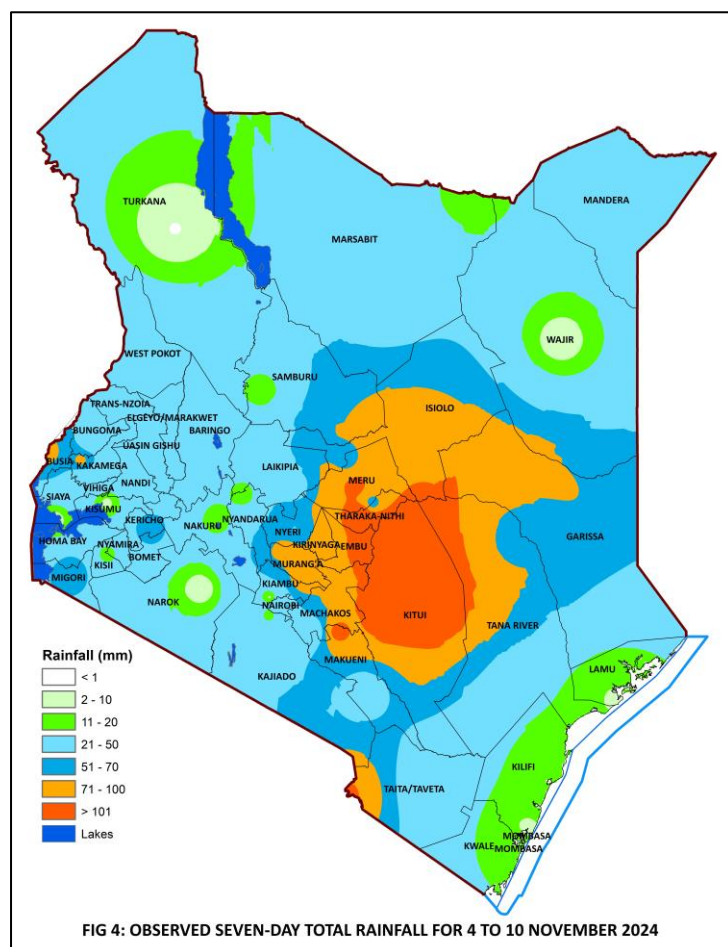
1.2 DETAILED TEMPERATURE FORECAST FOR 12 TO 18 NOVEMBER 2024

Expected maximum and minimum temperatures for selected towns and cities are shown in **Table 1**.

CITY/TOWN	MAX (°C)	MIN (°C)	CITY/TOWN	MAX (°C)	MIN (°C)	CITY/TOWN	MAX (°C)	MIN (°C)
LODWAR	37.0	24.0	KISUMU	33.0	17.0	THIKA	28.0	16.0
MARSABIT	28.0	18.0	SUBA	32.0	20.0	NGONG	26.0	12.0
MOYALE	30.0	19.0	NAKURU	26.0	12.0	MACHAKOS	27.0	14.0
GARISSA	38.0	25.0	NAROK	28.0	08.0	MAKINDU	34.0	20.0
WAJIR	37.0	23.0	LAIKIPIA	27.0	10.0	KITUI	32.0	17.0
MANDERA	37.0	25.0	NYAHURURU	23.0	08.0	VOI	34.0	20.0
KITALE	27.0	11.0	KANGEMA	26.0	15.0	LAMU	34.0	24.0
KAKAMEGA	30.0	14.0	NYERI	26.0	12.0	MALINDI	32.0	24.0
ELDORET	25.0	11.0	EMBU	27.0	15.0	MSABAHA	32.0	23.0
KERICHO	25.0	09.0	MERU	27.0	14.0	MTWAPA	32.0	23.0
KISII	27.0	15.0	NAIROBI	27.0	13.0	MOMBASA	33.0	24.0

2 WEATHER REVIEW FOR 4 TO 10 NOVEMBER 2024

2.1.1 Rainfall Review



Rainfall was recorded in most parts of the country as shown in **Figures 4 & 5**.

Comparing the 28 October to 3 November 2024 and the 4 to 10 November 2024 periods, it is noted that there was a significant increase in rainfall amounts over the Highlands East of the Rift Valley and the South-eastern lowlands.

The highest seven-day rainfall total (286.2 mm) was recorded at Managia Rainfall Station in Embu County.

Kalungu Rainfall Station in Kitui County recorded the highest amount of rainfall within 24-hours: 99.7mm on 10 November 2024.

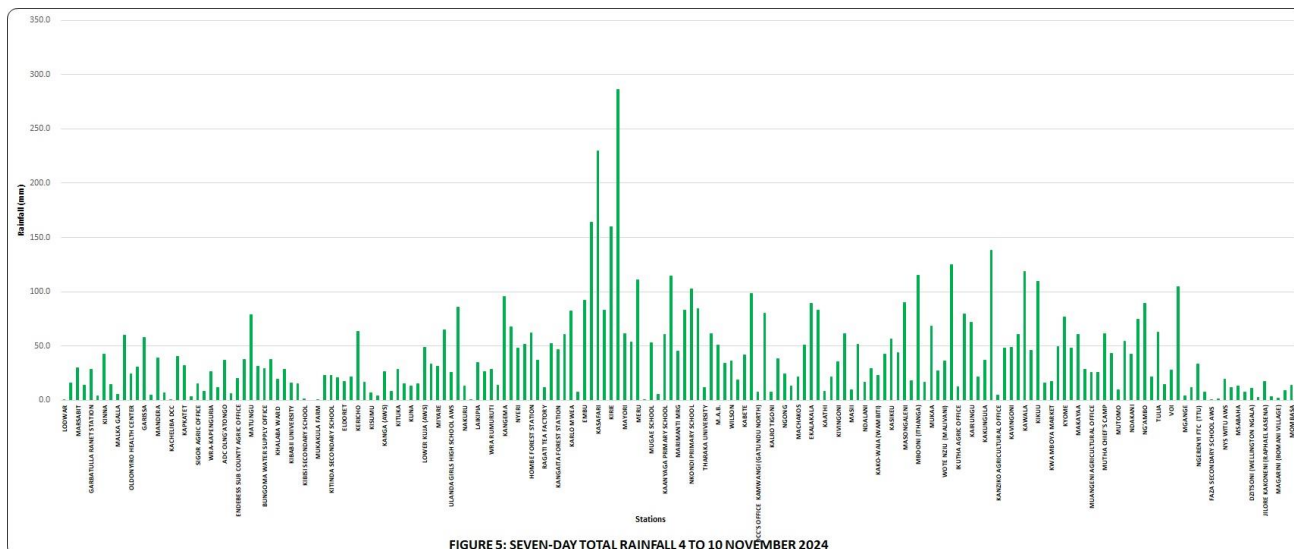


FIGURE 5: SEVEN-DAY TOTAL RAINFALL 4 TO 10 NOVEMBER 2024

2.2 Temperature Review

Comparing the 28 October to 3 November 2024 and the 4 to 10 November 2024 periods, it is noted that day-time (maximum) temperatures decreased over much of the country with only a few coastal stations recording marginal warming. Night-time (minimum) temperatures increased over most parts of the country though a few stations including Lodwar, Kitale and Kabete recorded slight cooling.

Garissa Meteorological Station recorded the highest daily maximum temperature: 37.9°C on 9 November 2024 while Nyahururu Meteorological Station recorded the lowest daily minimum temperature: 5.4°C on the same day. The same stations recorded the highest seven-day average maximum temperature and the lowest seven-day average minimum temperature: 37.0°C and 8.5°C respectively (see **Figure 6**).

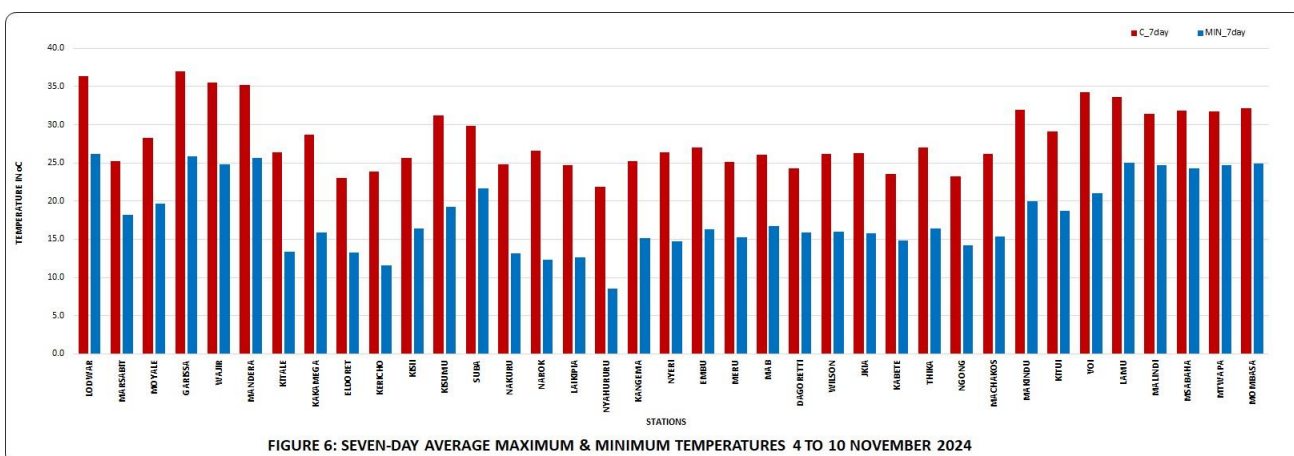


FIGURE 6: SEVEN-DAY AVERAGE MAXIMUM & MINIMUM TEMPERATURES 4 TO 10 NOVEMBER 2024

N.B: This forecast should be used in conjunction with the daily (24-hour) and five-day forecasts issued by this Department. County specific forecasts are available from the offices of respective County Directors of Meteorological Services.

KEY OF SCIENTIFIC WORDS USED

24-hour rainfall categories	
Range	Category
<5mm	Light
5-20mm	Moderate
20-50mm	Heavy
>50mm	Very heavy

Rainfall coverage	
Term	Meaning
Most places	Between 66% and 100%
Several places	Between 33% and 66%
Few places	Less than 33%



Charles Mugah
For DIRECTOR OF METEOROLOGICAL SERVICES