



Our Ref: MET/7/272

Issue date: 19 August 2024

SEVEN-DAY WEATHER FORECAST VALID 20 TO 26 AUGUST 2024

HIGHLIGHTS

Forecast for 20 to 26 August 2024

- Intermittent cold and cloudy conditions are likely to occur over some parts of the Highlands East and West of the Rift Valley, the South-eastern lowlands and the Rift Valley.
- Rainfall is expected to continue over some parts of the Highlands East and West of the Rift Valley, the Lake Victoria Basin, the Rift Valley, North-western and North-eastern Kenya.

Weather Review for 12 to 18 August 2024

- The Highlands West of the Rift Valley, the North Rift Valley and North-western Kenya recorded significant rainfall.
- Day-time (maximum) temperatures increased over some stations including Garissa, Mombasa and Kitui and decreased over Kisii, Nyahururu and Nyeri among others.
- Night-time (minimum) temperatures decreased over most parts of the country but a few stations including Kitale, Voi and Nakuru recorded marginal warming.

1 FORECAST FOR 20 TO 26 AUGUST 2024

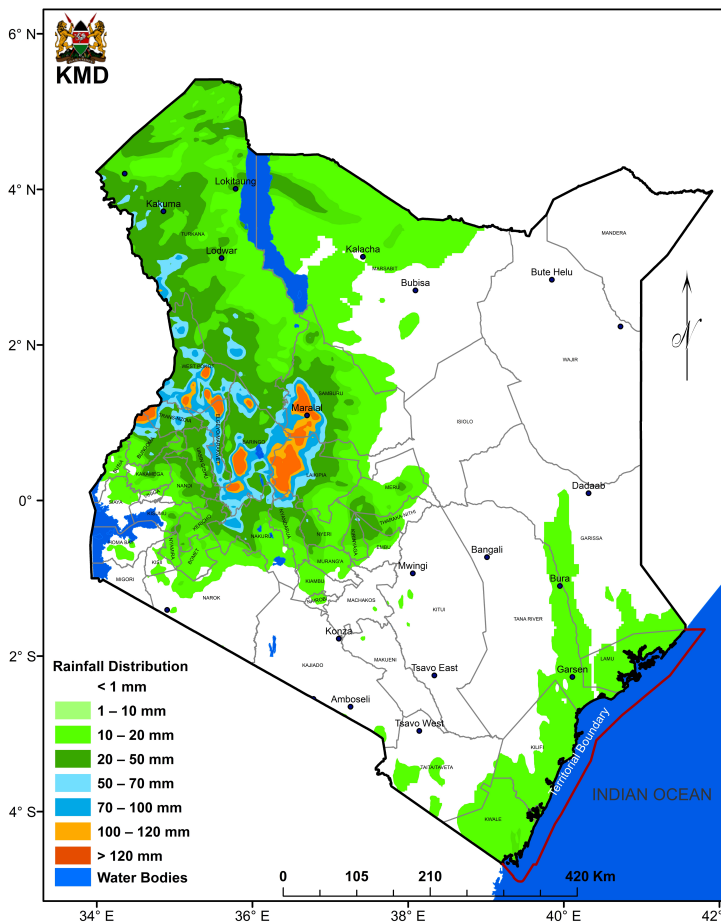


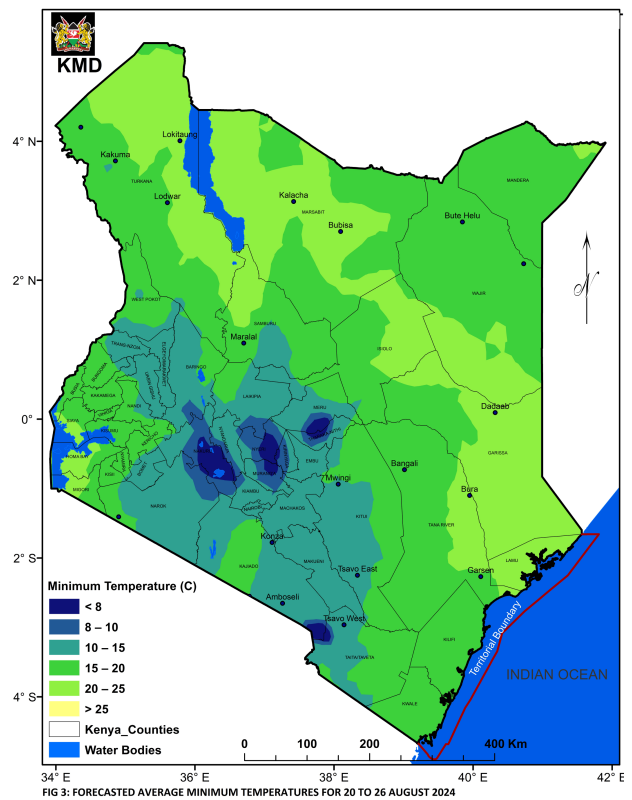
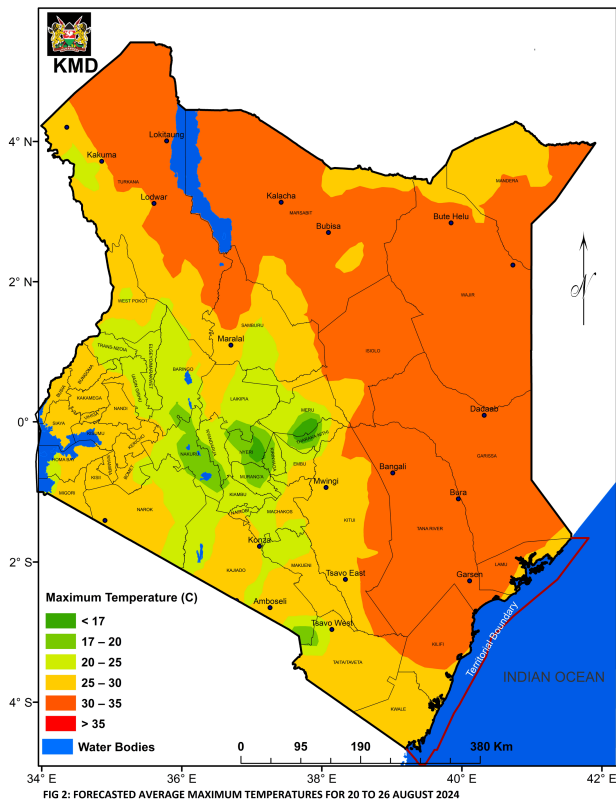
FIG 1: FORECASTED SEVEN-DAY TOTAL RAINFALL FOR 20 TO 26 AUGUST 2024

Rainfall is expected to continue over some parts of the Highlands East and West of the Rift Valley, the Lake Victoria Basin, the Rift Valley, North-western and North-eastern Kenya as shown in **Figure 1**. The rest of the country is likely to be generally dry.

Intermittent cold and cloudy conditions are likely to occur over some parts of the Highlands East and West of the Rift Valley, the South-eastern lowlands and the Rift Valley.

High average daytime (maximum) temperatures of more than 30°C will be experienced in some parts of the Coast, North-eastern and North-western Kenya as shown in **Figure 2**.

Average night-time (minimum) temperatures will be low (less than 10°C) over some parts of the Highlands East of the Rift Valley, the South-eastern lowlands and the Rift Valley as shown in **Figure 3**.



1.1 DETAILED REGIONAL RAINFALL FORECAST FOR 20 TO 26 AUGUST 2024

1.1.1 The Highlands West of the Rift Valley, the Lake Victoria Basin and the Rift Valley (*Kisii, Nyamira, Nandi, Kericho, Bomet, Kakamega, Vihiga, Bungoma, Siaya, Kisumu, Homabay, Busia, Migori, Narok, Baringo, Nakuru, Trans-Nzoia, Uasin-Gishu, Elgeyo-Marakwet and West-Pokot Counties*):

Morning rains are expected over few places. Afternoon showers and thunderstorms are likely to occur over few places occasionally spreading to several places. Night showers are expected over few places.

1.1.2 North-western Kenya (*Turkana and Samburu Counties*):

Morning rains as well as afternoon and night showers and thunderstorms are expected over few places occasionally spreading to several places.

1.1.3 The Highlands East of the Rift Valley (including Nairobi County) (*Nyandarua, Laikipia, Nyeri, Kirinyaga, Murang'a, Kiambu, Meru, Embu, Tharaka-Nithi and Nairobi Counties*):

Intermittent cloudiness, with light rains over few places, is expected in the mornings giving way to sunny intervals. Afternoon and night showers are expected over few places.

1.1.4 North-eastern Kenya (*Marsabit, Mandera, Wajir, Garissa and Isiolo Counties*):

Sunny intervals are expected during the day while nights are likely to be partly cloudy. However, morning rains as well as afternoon and night showers are expected over some parts of Marsabit County.

1.1.5 The South-eastern lowlands (*Machakos, Kitui, Makueni, Kajiado and Taita-Taveta Counties*):

Occasional cloudiness is expected in the morning giving way to sunny intervals. Nights are likely to be partly cloudy.

1.1.6 The Coast (*Mombasa, Tana-River, Kilifi, Lamu and Kwale Counties*):

Sunny intervals are expected during the day while nights are likely to be partly cloudy. However, occasional morning and afternoon showers may occur over few places.

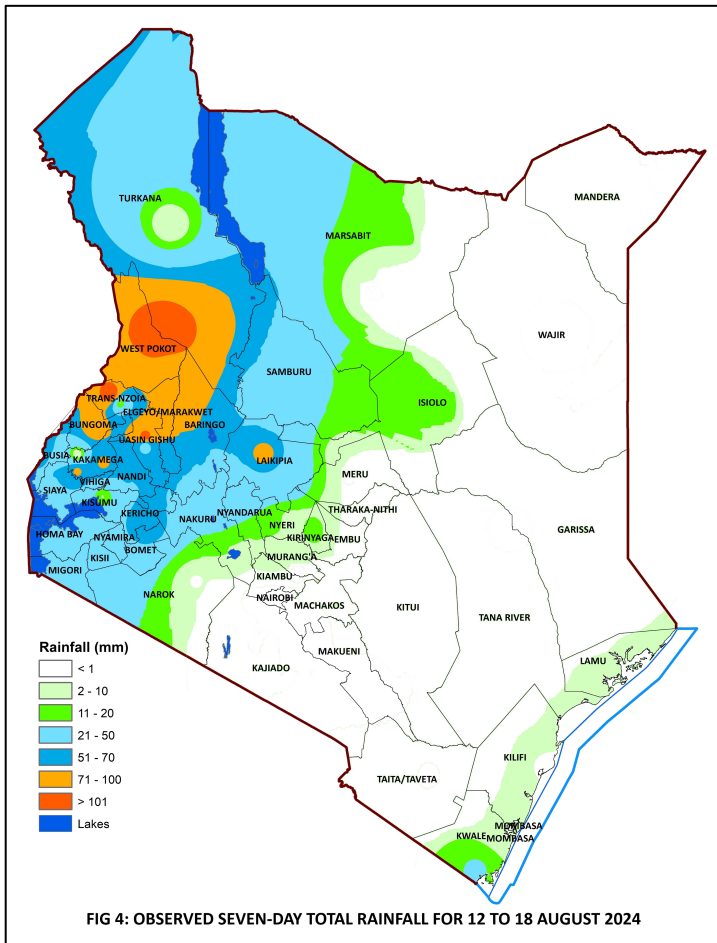
1.2 DETAILED TEMPERATURE FORECAST FOR 20 TO 26 AUGUST 2024

Expected maximum and minimum temperatures for selected towns and cities are shown in **Table 1**.

CITY/TOWN	MAX (°C)	MIN (°C)	CITY/TOWN	MAX (°C)	MIN (°C)	CITY/TOWN	MAX (°C)	MIN (°C)
LODWAR	36.0	23.0	KISUMU	31.0	17.0	THIKA	27.0	11.0
MARSABIT	26.0	15.0	SUBA	29.0	19.0	NGONG	23.0	09.0
MOYALE	29.0	18.0	NAKURU	25.0	12.0	MACHAKOS	25.0	09.0
GARISSA	35.0	22.0	NAROK	26.0	09.0	MAKINDU	30.0	13.0
WAJIR	35.0	22.0	NYAHURURU	22.0	07.0	KITUI	29.0	11.0
MANDERA	37.0	24.0	KANGEMA	22.0	12.0	VOI	32.0	18.0
KITALE	26.0	12.0	NYERI	24.0	12.0	LAMU	31.0	24.0
KAKAMEGA	30.0	15.0	EMBU	25.0	12.0	MALINDI	30.0	24.0
ELDORET	24.0	10.0	MERU	23.0	11.0	MSABAHA	29.0	23.0
KERICHO	25.0	10.0	LAIKIPIA	26.0	10.0	MTWAPA	30.0	22.0
KISII	27.0	15.0	NAIROBI	26.0	10.0	MOMBASA	32.0	21.0

2 WEATHER REVIEW FOR 12 TO 18 AUGUST 2024

2.1.1 Rainfall Review

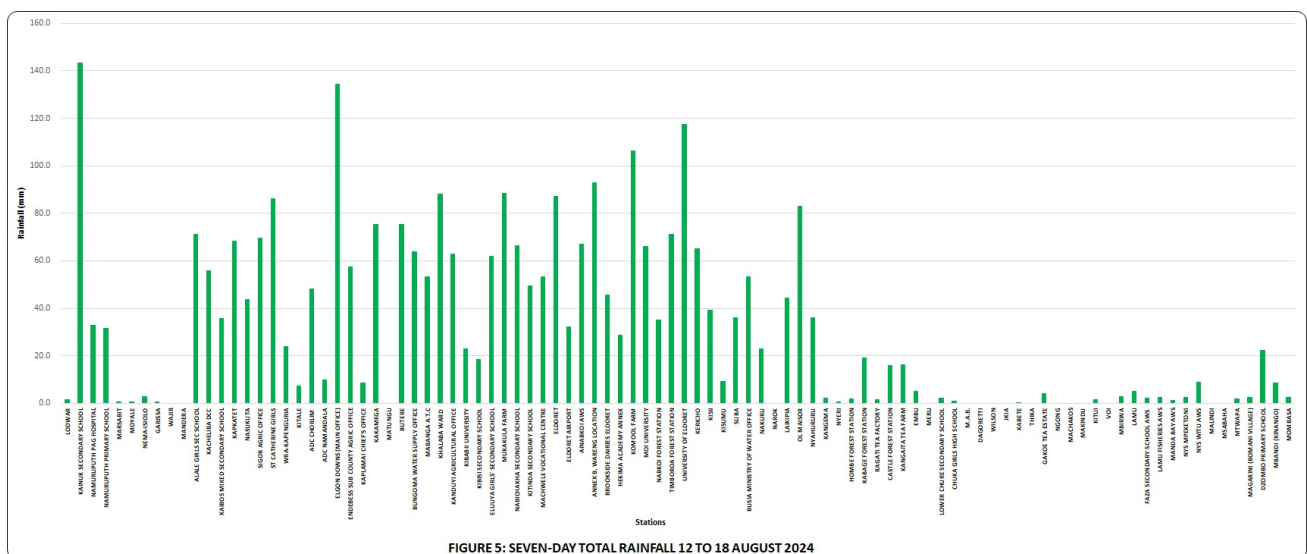


Rainfall continued to be recorded over the Highlands West of the Rift Valley, the North Rift Valley and North-western Kenya as shown in **Figures 4 & 5**.

Comparing the 5 to 11 August 2024 and the 12 to 18 August 2024 periods, it is noted that there was an increase in rainfall amounts over the areas that received rainfall.

The highest seven-day rainfall total (143.2 mm) was recorded at the rainfall station at Kainuk Secondary School in Turkana County.

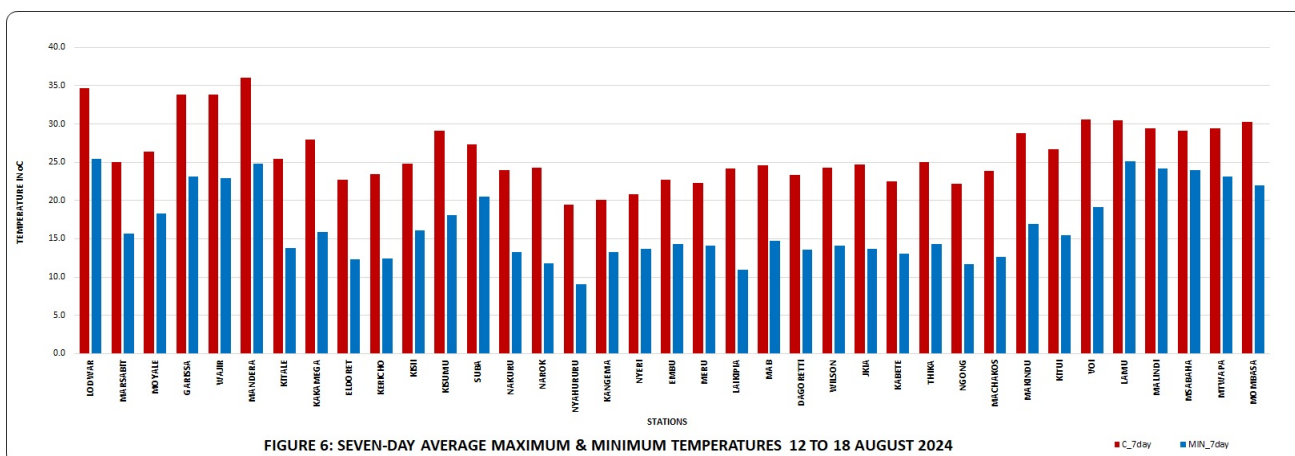
Kakamega Meteorological Station recorded the highest amount of rainfall within 24-hours: 68.1 mm on 17 August 2024.



2.2 Temperature Review

Comparing the 5 to 11 August 2024 and the 12 to 18 August 2024 periods, it is noted that day-time (maximum) temperatures increased over some stations including Garissa, Mombasa and Kitui and decreased over Kisii, Nyahururu and Nyeri among others. Night-time (minimum) temperatures decreased over most parts of the country but a few stations including Kitale, Voi and Nakuru recorded marginal warming.

Mandera Meteorological Station recorded the highest daily maximum temperature: 37.2°C on 12 August 2024 while Nyahururu Meteorological Station recorded the lowest daily minimum temperature: 7.2°C on 14 August 2024. The same stations recorded the highest seven-day average maximum temperature and the lowest seven-day average minimum temperature: 36.0°C and 9.0°C respectively (see **Figure 6**).



N.B: This forecast should be used in conjunction with the daily (24-hour) and five-day forecasts issued by this Department. County specific forecasts are available from the offices of respective County Directors of Meteorology.

KEY OF SCIENTIFIC WORDS USED

24-hour rainfall categories	
Range	Category
<5mm	Light
5-20mm	Moderate
20-50mm	Heavy
>50mm	Very heavy

Rainfall coverage	
Term	Meaning
Most places	Between 66% and 100%
Several places	Between 33% and 66%
Few places	Less than 33%

Dr. David Gikungu
DIRECTOR OF METEOROLOGICAL SERVICES