



Our Ref: MET/7/308

Date: 28 April 2025

SEVEN-DAY WEATHER FORECAST FOR 29 APRIL TO 5 MAY 2025

SUMMARY

Forecast for 29 April to 5 May 2025

- Rainfall is expected over few parts of the country.

Weather Review for 21 to 27 April 2025

- Rainfall was recorded in several parts of the country.
- Day-time (maximum) temperatures increased over some parts of the Highlands West of the Rift Valley, North-eastern and North-western Kenya and decreased over the rest of the country.
- Night-time (minimum) temperatures decreased over most parts of the country with only a few stations such as Mandera, Suba, Narok and Kangema recording increases.

1 FORECAST FOR 29 APRIL TO 5 MAY 2025

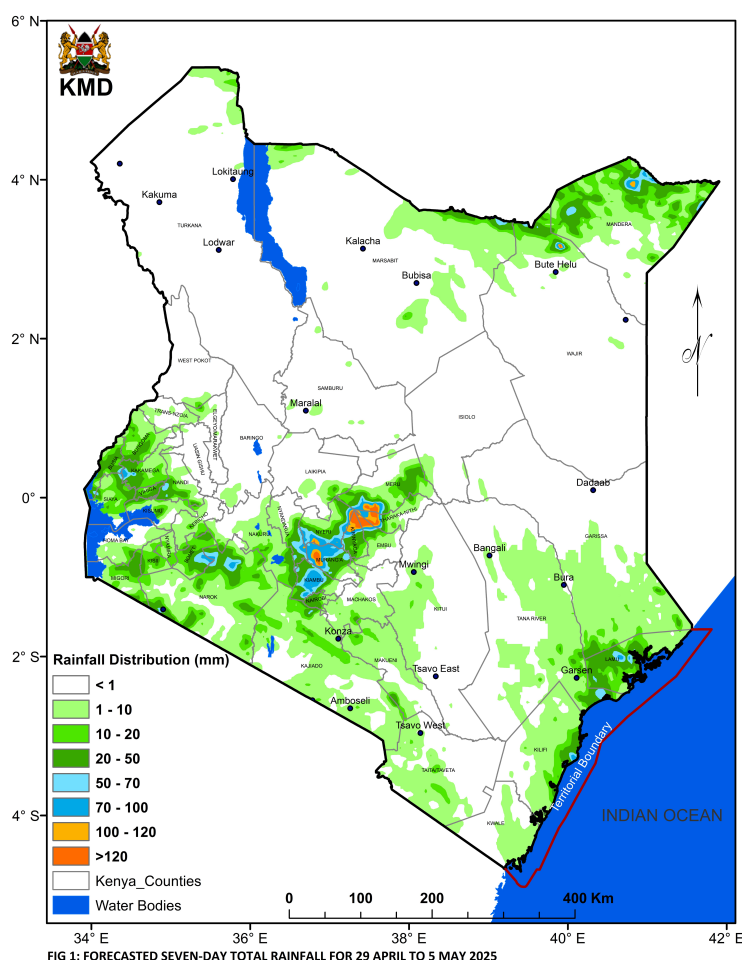
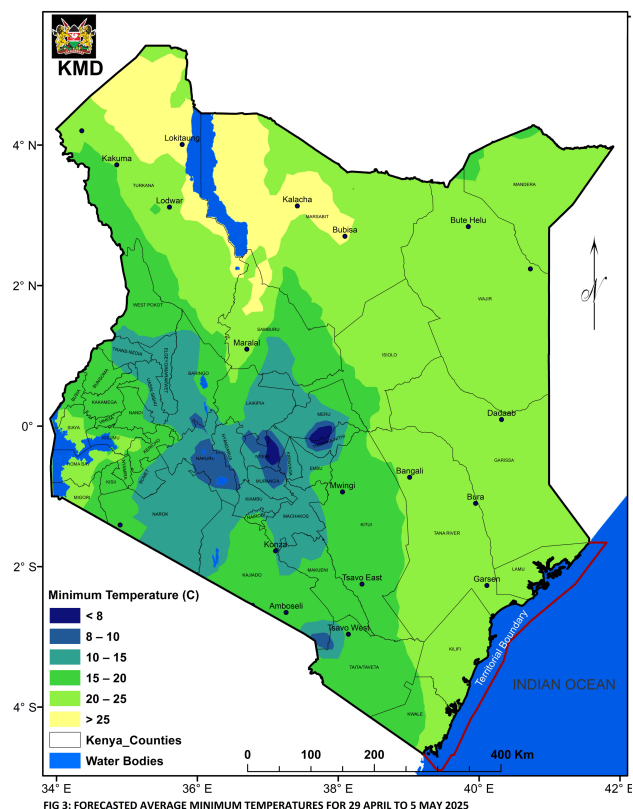
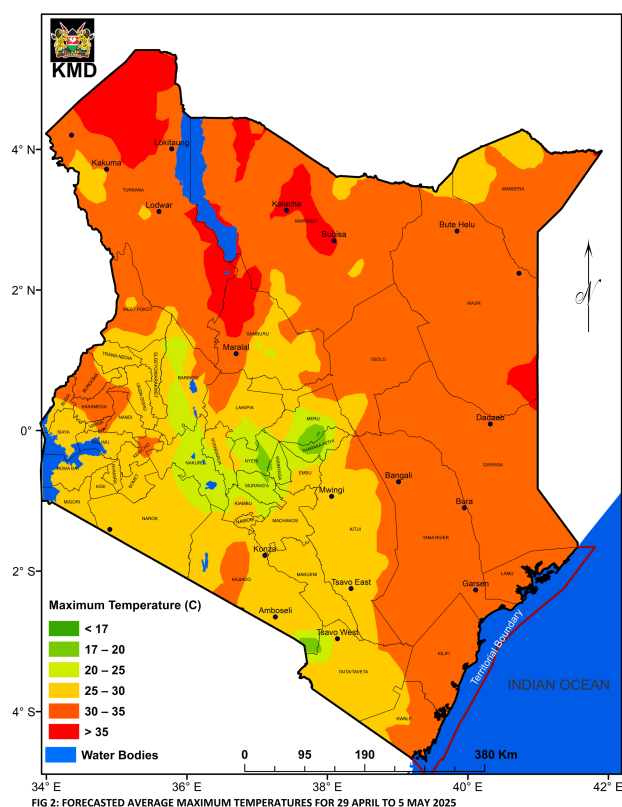


FIG 1: FORECASTED SEVEN-DAY TOTAL RAINFALL FOR 29 APRIL TO 5 MAY 2025

Rainfall is expected over few parts of the country, as shown in **Figure 1**.

Average daytime (maximum) temperatures of more than 30°C will be experienced in the Coast, North-eastern and North-western Kenya as well as over isolated areas in the Highlands West of the Rift Valley and the South-eastern lowlands, as shown in **Figure 2**.

Average night-time (minimum) temperatures will be less than 10°C in some parts of the Highlands East of the Rift Valley, the Central Rift Valley and in the vicinity of Mt. Kilimanjaro, as illustrated in **Figure 3**.



1.1 DETAILED REGIONAL RAINFALL FORECAST FOR 29 APRIL TO 5 MAY 2025

1.1.1 The Highlands West of the Rift Valley, the Lake Victoria Basin and the Rift Valley (Nandi, Kakamega, Vihiga, Bungoma, Siaya, Busia, Baringo, Nakuru, Trans-Nzoia, Uasin-Gishu, Elgeyo-Marakwet, West-Pokot, Kisii, Nyamira, Kericho, Bomet, Kisumu, Homabay, Migori and Narok Counties):

Sunny intervals are expected in the mornings though rains may occur over few places. Afternoon and night showers and thunderstorms are likely to occur over few places occasionally spreading to several places.

1.1.2 North-western Kenya (Turkana and Samburu Counties):

Sunny intervals are expected during the day while nights are likely to be partly cloudy. However, there is a possibility of morning rains as well as afternoon and night showers occurring over few places.

1.1.3 The Highlands East of the Rift Valley (including Nairobi County) (Nyandarua, Laikipia, Nyeri, Kirinyaga, Murang'a, Kiambu, Meru, Embu, Tharaka-Nithi and Nairobi Counties):

Mornings are likely to be cloudy, with light rains over few places, giving way to sunny intervals. Afternoon and night showers are expected over few places.

1.1.4 North-eastern Kenya (Marsabit, Mandera, Wajir, Garissa and Isiolo Counties):

Morning rains as well as afternoon and night showers are likely to occur over few places.

1.1.5 The South-eastern lowlands (*Machakos, Kitui, Makueni, Kajiado and Taita-Taveta Counties as well as the inland parts of Tana-River County*):

Sunny intervals are expected during the day while nights are likely to be partly cloudy. However, afternoon and night showers may occur over few places.

1.1.6 The Coast (*Mombasa, Kilifi, Lamu and Kwale Counties as well as the coastal parts of Tana-River County*):

Sunny intervals are expected during the day while nights are likely to be partly cloudy. However, few places may experience morning, afternoon and night showers.

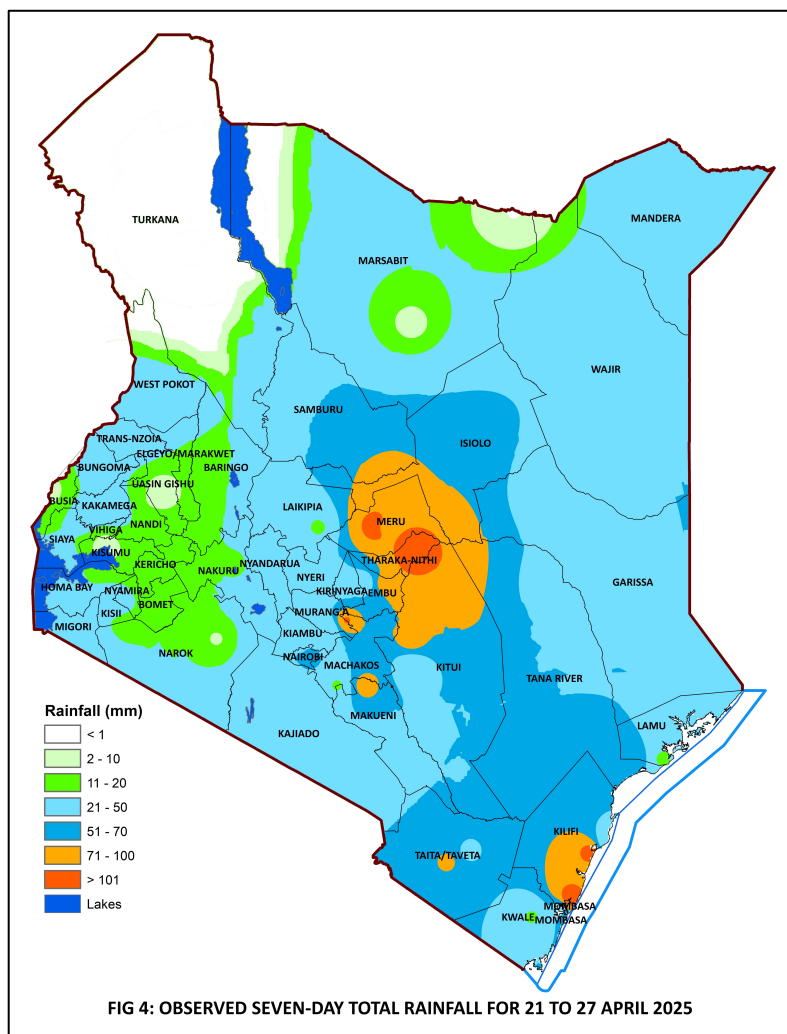
1.2 DETAILED TEMPERATURE FORECAST FOR 29 APRIL TO 5 MAY 2025

Expected maximum and minimum temperatures for selected towns and cities are shown in **Table 1**.

TABLE 1: FORECASTED MAXIMUM AND MINIMUM TEMPERATURES FOR SELECTED CITIES AND TOWNS								
CITY/TOWN	MAX (°C)	MIN (°C)	CITY/TOWN	MAX (°C)	MIN (°C)	CITY/TOWN	MAX (°C)	MIN (°C)
LODWAR	37.0	21.0	KISUMU	30.0	17.0	THIKA	28.0	15.0
MARSABIT	25.0	17.0	SUBA	31.0	18.0	MACHAKOS	27.0	13.0
MOYALE	28.0	20.0	NAKURU	27.0	12.0	MAKINDU	30.0	18.0
GARISSA	35.0	22.0	NAROK	24.0	12.0	KITUI	30.0	17.0
WAJIR	34.0	22.0	LAIKIPIA	28.0	10.0	VOI	33.0	20.0
MANDERA	38.0	26.0	NYAHURURU	24.0	06.0	LAMU	34.0	24.0
KITALE	28.0	12.0	KANGEMA	26.0	15.0	MALINDI	32.0	25.0
KAKAMEGA	32.0	14.0	NYERI	27.0	12.0	MSABAHA	32.0	24.0
ELDORET	25.0	10.0	EMBU	27.0	14.0	MTWAPA	32.0	24.0
KERICHO	27.0	09.0	MERU	26.0	12.0	MOMBASA	32.0	24.0
KISII	28.0	15.0	NAIROBI	28.0	13.0			

2 WEATHER REVIEW FOR 21 TO 27 APRIL 2025

2.1.1 Rainfall Review



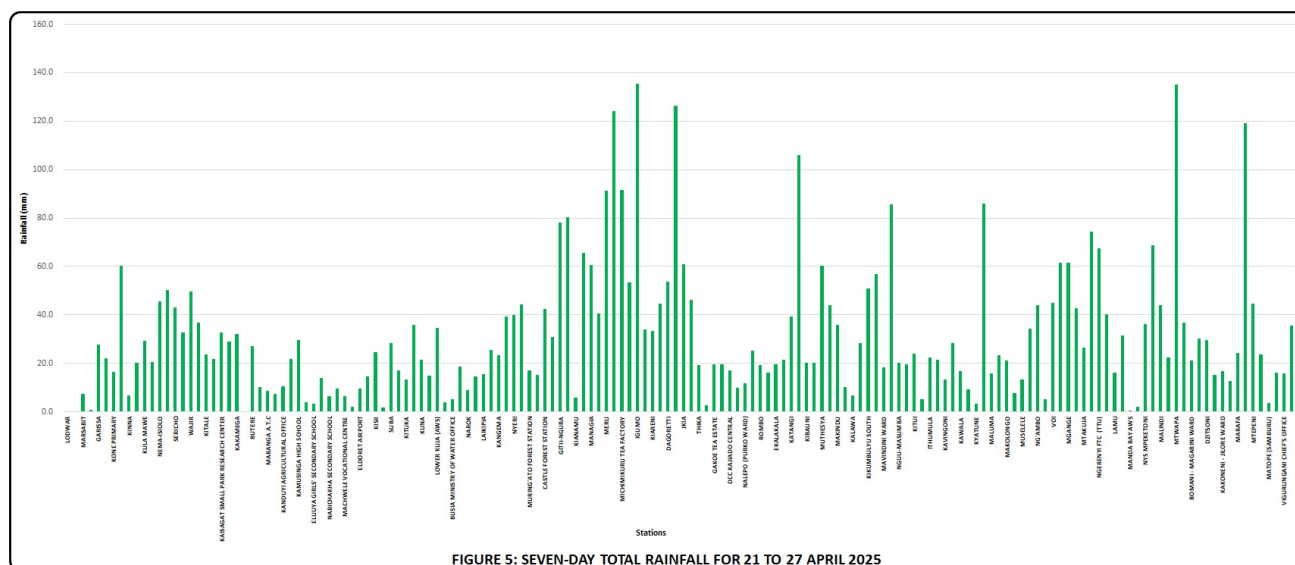
Rainfall was recorded in several parts of the country, as shown in **Figures 4 and 5**.

Heavy rainfall (more than 50mm in 24hrs) was received in a number of Counties including Nairobi, Kilifi, Machakos, Embu, Tharaka Nithi, Isiolo, Meru, Makueni and Taita Taveta.

Comparing the 14 to 20 April 2025 and the 21 to 27 April 2025 periods, it is noted that rainfall amounts increased over the Coast but decreased over the rest of the country.

The highest seven-day rainfall total (135.4mm) was recorded at Igumo Rainfall Station in Tharaka Nithi County.

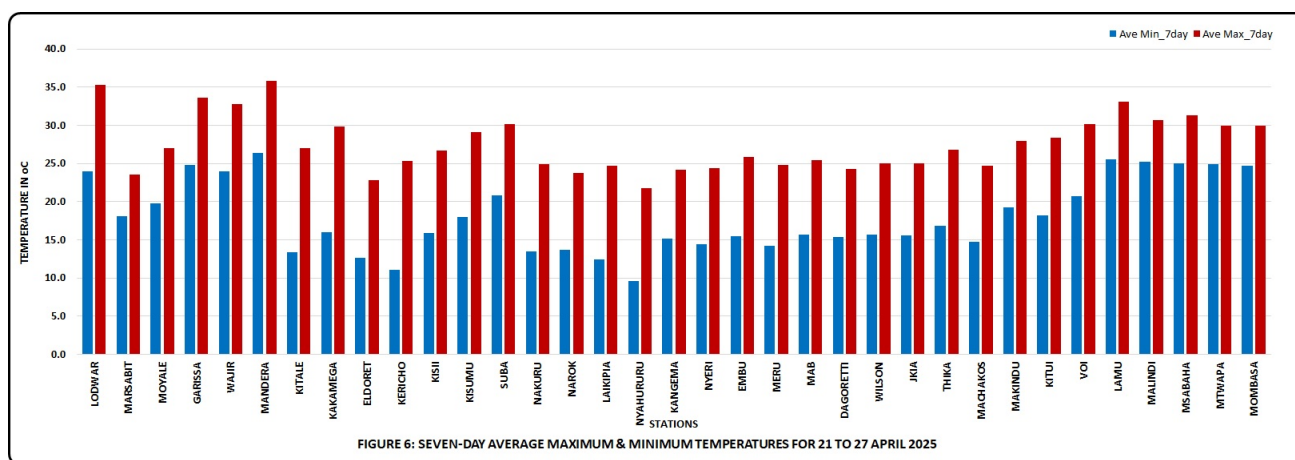
Wilson Airport Meteorological Station recorded the highest amount of rainfall within 24-hours: 97.1mm on 21 April 2025.



2.2 Temperature Review

Comparing the 14 to 20 April 2025 and the 21 to 27 April 2025 periods, it is noted that day-time (maximum) temperatures increased over some parts of the Highlands West of the Rift Valley, North-eastern and North-western Kenya and decreased over the rest of the country. Night-time (minimum) temperatures decreased over most parts of the country with only a few stations such as Mandera, Suba, Narok and Kangema recording increases.

Mandera Meteorological Station recorded the highest daily maximum temperature: 37.5°C on 27 April 2025 while Nyahururu Meteorological Station recorded the lowest daily minimum temperature: 5.7°C on 26 April 2025. The same stations recorded the highest seven-day average maximum temperature and the lowest seven-day average minimum temperature: 35.9°C and 9.6°C respectively (see Figure 6).



N.B: This forecast should be used in conjunction with the daily (24-hour) and five-day forecasts issued by this Department. County specific forecasts are available from the offices of respective County Directors of Meteorological Services.

KEY OF SCIENTIFIC WORDS USED

24-hour rainfall categories	
Range	Category
<5mm	Light
5-20mm	Moderate
20-50mm	Heavy
>50mm	Very heavy

Rainfall coverage	
Term	Meaning
Most places	Between 66% and 100%
Several places	Between 33% and 66%
Few places	Less than 33%

Dr. David Gikungu

DIRECTOR OF METEOROLOGICAL SERVICES