



Our Ref: MET/7/309

Date: 5 May 2025

SEVEN-DAY WEATHER FORECAST FOR 6 TO 12 MAY 2025

SUMMARY

Forecast for 6 to 12 May 2025

- Rainfall is expected over several parts of the country.
- Isolated heavy rainfall events may occur over some parts of the Highlands East and West of the Rift Valley, the Lake Victoria Basin, the Rift Valley and the Coast.

Weather Review for 28 April to 4 May 2025

- Rainfall was recorded in several parts of the country.
- Day-time (maximum) increased over much of the country though a few stations such as Kakamega, Kisumu and Suba recorded decreases.
- Night-time (minimum) temperatures also increased over most parts of the country with only Laikipia and Nyahururu recording decreases.

1 FORECAST FOR 6 TO 12 MAY 2025

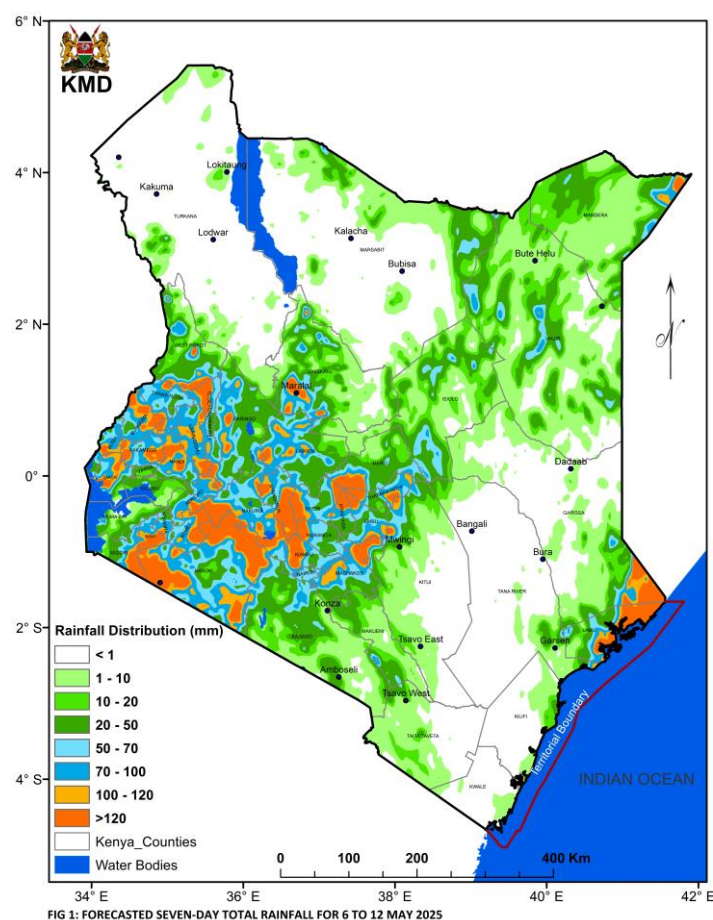
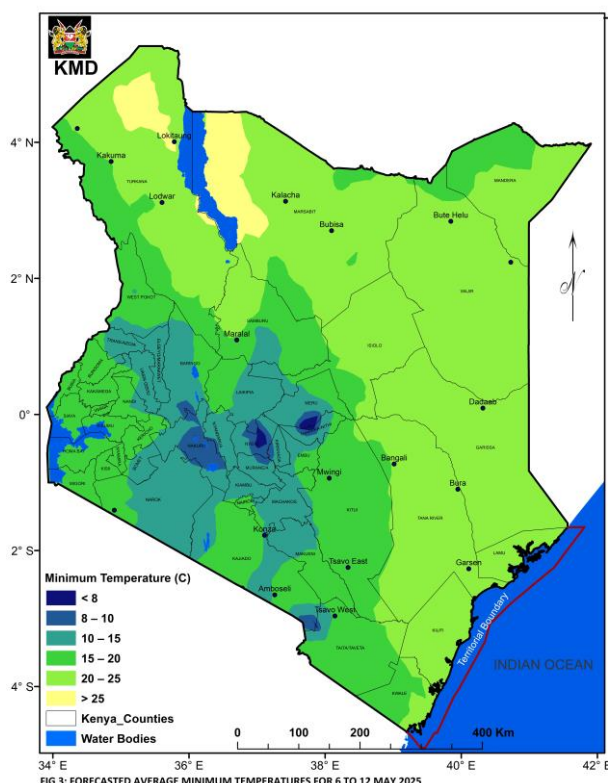
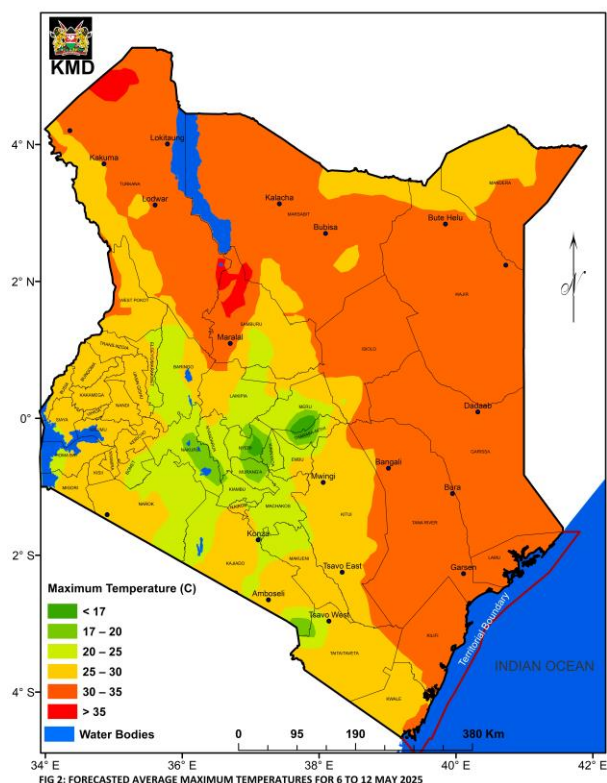


FIG 1: FORECASTED SEVEN-DAY TOTAL RAINFALL FOR 6 TO 12 MAY 2025

Rainfall is expected over several parts of the country. Isolated heavy rainfall events may occur over some parts of the Highlands East and West of the Rift Valley, the Lake Victoria Basin, the Rift Valley and the Coast, as shown in **Figure 1**.

Average daytime (maximum) temperatures of more than 30°C will be experienced in much of the Coast, North-eastern and North-western Kenya, as shown in **Figure 2**.

Average night-time (minimum) temperatures will be less than 10°C in some parts of the Highlands East of the Rift Valley, the Central Rift Valley and in the vicinity of Mt. Kilimanjaro, as illustrated in **Figure 3**.



1.1 DETAILED REGIONAL RAINFALL FORECAST FOR 6 TO 12 MAY 2025

1.1.1 The Highlands West of the Rift Valley, the Lake Victoria Basin and the Rift Valley (Nandi, Kakamega, Vihiga, Bungoma, Siaya, Busia, Baringo, Nakuru, Trans-Nzoia, Uasin-Gishu, Elgeyo-Marakwet, West-Pokot, Kisii, Nyamira, Kericho, Bomet, Kisumu, Homabay, Migori and Narok Counties):

Morning rains are expected over few places. Afternoon and night showers and thunderstorms are likely to occur over several places.

1.1.2 North-western Kenya (Turkana and Samburu Counties):

Morning rains as well as afternoon and night showers and thunderstorms are expected over few places.

1.1.3 The Highlands East of the Rift Valley (including Nairobi County) (Nyandarua, Laikipia, Nyeri, Kirinyaga, Murang'a, Kiambu, Meru, Embu, Tharaka-Nithi and Nairobi Counties):

Mornings are likely to be cloudy, with light rains over few places, giving way to sunny intervals. Afternoon and night showers and thunderstorms are expected over few places, occasionally spreading to several places.

1.1.4 North-eastern Kenya (Marsabit, Mandera, Wajir, Garissa and Isiolo Counties):

Morning rains as well as afternoon and night showers and thunderstorms are likely to occur over few places.

1.1.5 The South-eastern lowlands (*Machakos, Kitui, Makueni, Kajiado and Taita-Taveta Counties as well as the inland parts of Tana-River County*):

Sunny intervals are expected during the day while nights are likely to be partly cloudy. However, there is a possibility of afternoon and night showers occurring over few places.

1.1.6 The Coast (*Mombasa, Kilifi, Lamu and Kwale Counties as well as the coastal parts of Tana-River County*):

Morning, afternoon and night showers are likely to occur over few places, occasionally spreading to several places.

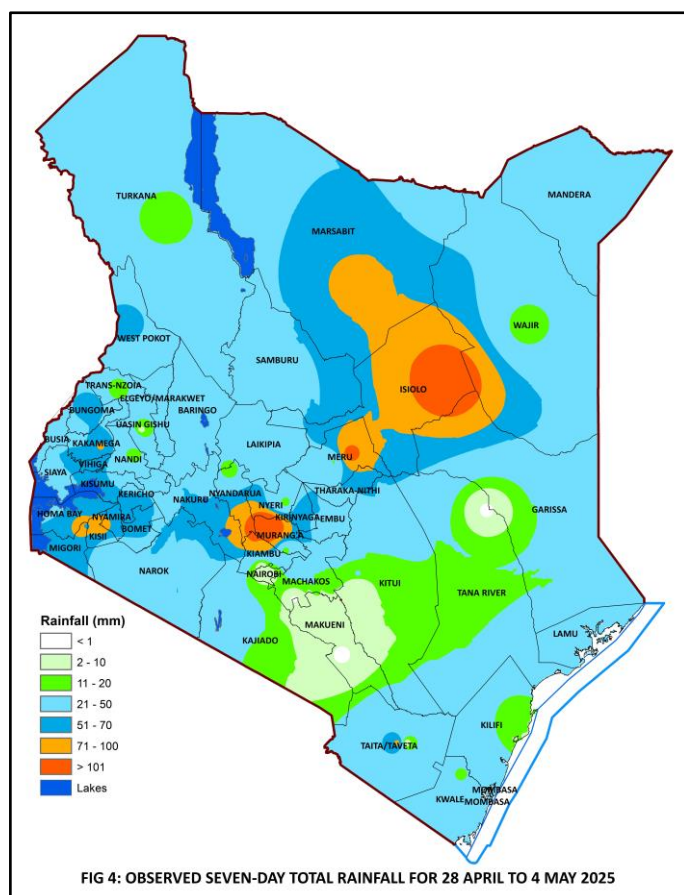
1.2 DETAILED TEMPERATURE FORECAST FOR 6 TO 12 MAY 2025

Expected maximum and minimum temperatures for selected towns and cities are shown in **Table 1**.

TABLE 1: FORECASTED MAXIMUM AND MINIMUM TEMPERATURES FOR SELECTED CITIES AND TOWNS								
CITY/TOWN	MAX (°C)	MIN (°C)	CITY/TOWN	MAX (°C)	MIN (°C)	CITY/TOWN	MAX (°C)	MIN (°C)
LODWAR	38.0	23.0	KISUMU	29.0	18.0	THIKA	29.0	16.0
MARSABIT	26.0	18.0	SUBA	30.0	20.0	MACHAKOS	27.0	13.0
MOYALE	28.0	19.0	NAKURU	28.0	12.0	MAKINDU	30.0	18.0
GARISSA	36.0	25.0	NAROK	26.0	12.0	KITUI	30.0	17.0
WAJIR	35.0	25.0	LAIKIPIA	28.0	10.0	VOI	32.0	21.0
MANDERA	39.0	25.0	NYAHURURU	24.0	06.0	LAMU	34.0	26.0
KITALE	28.0	13.0	KANGEMA	27.0	15.0	MALINDI	32.0	25.0
KAKAMEGA	30.0	16.0	NYERI	27.0	14.0	MSABAHA	33.0	25.0
ELDORET	25.0	11.0	EMBU	28.0	16.0	MTWAPA	33.0	25.0
KERICHO	28.0	10.0	MERU	26.0	13.0	MOMBASA	32.0	24.0
KISII	28.0	16.0	NAIROBI	29.0	14.0			

2 WEATHER REVIEW FOR 28 APRIL TO 4 MAY 2025

2.1.1 Rainfall Review



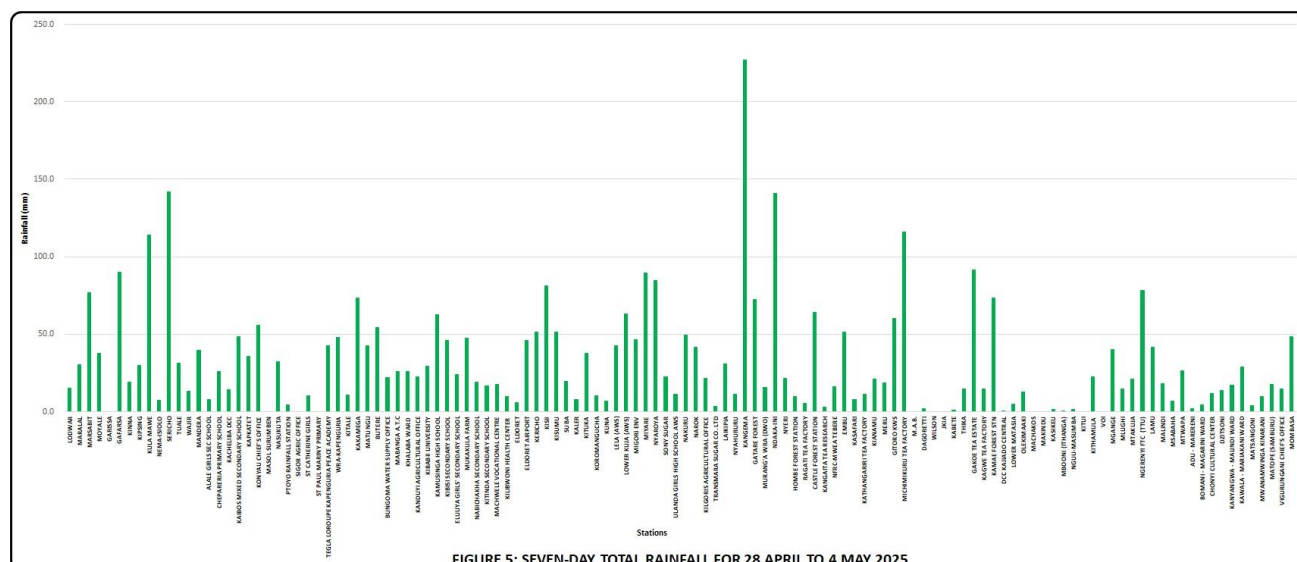
Rainfall was recorded in several parts of the country, as shown in **Figures 4 and 5**.

Heavy rainfall (more than 50mm in 24hrs) was received in a number of Counties including Isiolo, Meru, Murang'a, Migori, Taita Taveta and Kiambu.

Comparing the 21 to 27 April 2025 and the 28 April to 4 May 2025 periods, it is noted that rainfall amounts increased over the Highlands West of the Rift Valley, North-eastern and North-western Kenya but decreased over the Highlands East of the Rift Valley, the South-eastern lowlands and the Coast.

The highest seven-day rainfall total (226.8mm) was recorded at Kangema Meteorological Station in Murang'a County.

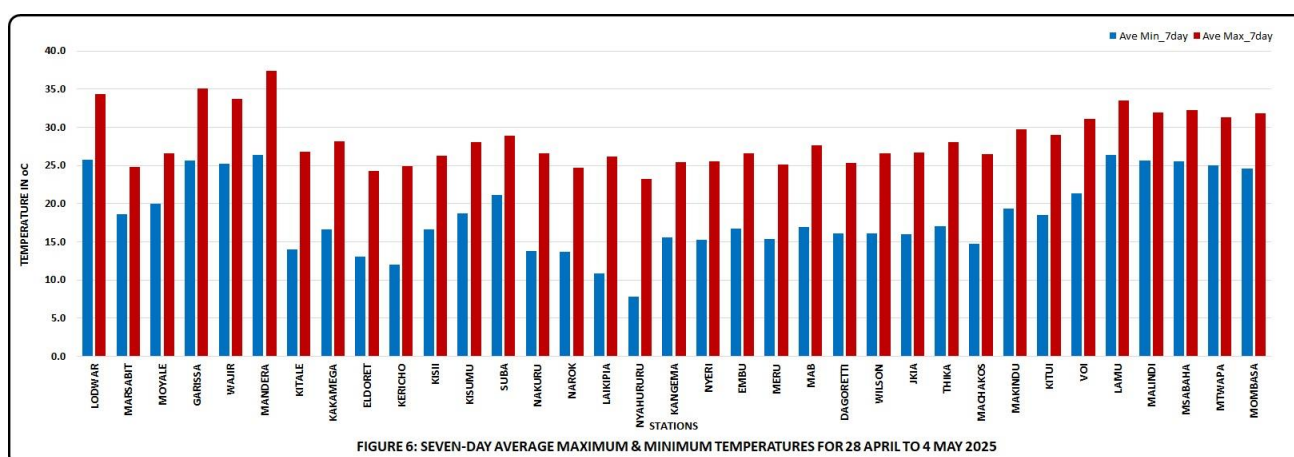
Sericho Rainfall Station in Isiolo County recorded the highest amount of rainfall within 24-hours: 142.0mm on 4 May 2025.



2.2 Temperature Review

Comparing the 21 to 27 April 2025 and the 28 April to 4 May 2025 periods, it is noted that day-time (maximum) temperatures increased over much of the country though a few stations such as Kakamega, Kisumu and Suba recorded decreases. Night-time (minimum) temperatures also increased over most parts of the country with only Laikipia and Nyahururu recording decreases.

Mandera Meteorological Station recorded the highest daily maximum temperature: 39.4°C on 1 May 2025 while Nyahururu Meteorological Station recorded the lowest daily minimum temperature: 6.2°C on 28 April 2025. The same stations recorded the highest seven-day average maximum temperature and the lowest seven-day average minimum temperature: 37.4°C and 9.6°C respectively (see Figure 6).



N.B: This forecast should be used in conjunction with the daily (24-hour) and five-day forecasts issued by this Department. County specific forecasts are available from the offices of respective County Directors of Meteorological Services.

KEY OF SCIENTIFIC WORDS USED

24-hour rainfall categories	
Range	Category
<5mm	Light
5-20mm	Moderate
20-50mm	Heavy
>50mm	Very heavy

Rainfall coverage	
Term	Meaning
Most places	Between 66% and 100%
Several places	Between 33% and 66%
Few places	Less than 33%

Kennedy Thiong'o

Kennedy Thiong'o

For DIRECTOR OF METEOROLOGICAL SERVICES