



**REPUBLIC OF KENYA**

**MINISTRY OF ENVIRONMENT, CLIMATE CHANGE AND FORESTRY**

**KENYA METEOROLOGICAL DEPARTMENT**

*Dagoretti Corner, Ngong Road, P. O. Box 30259, 00100 GPO, Nairobi, Kenya*

*Telephone: 254 (0) 20 3867880-7, Fax: 254 (0) 20 3876955/3877373/3867888,*

*E-mail: [director@meteo.go.ke](mailto:director@meteo.go.ke), [info@meteo.go.ke](mailto:info@meteo.go.ke); Website: <https://www.meteo.go.ke>*

**Biometeorological Services Division**

---

**WEEKLY BIOMETEOROLOGICAL BULLETIN (30<sup>TH</sup> JULY–5<sup>TH</sup> AUGUST, 2024)**

*Ref No: KMD/MM/07-2024*

*Issue Date: 29/07/2024*

**1.0 PREAMBLE**

Biometeorology is an interdisciplinary science of interactions between atmospheric processes and living organisms - plants, animals and human-beings. The Biometeorological Services Division collects, analyzes and interprets Meteorological and Health data in liaison with partners in the Health Sector for advisory development.

The weather information provided is aimed at guiding residents to identify and recognize the likelihood of occurrence of weather-related health diseases according to the issued advisories and take necessary action.

**Summary**

During this season, we are expecting unusually low temperatures. Residents should take necessary precautions to prevent cold-related illnesses.

**REVIEW FOR LAST WEEK (22<sup>ND</sup> JULY, 2024–28<sup>TH</sup> JULY, 2024)**

**1.1 High Rainfall**

This section lists stations recorded more than 50mm total rainfall in the last 7 days. All stations recorded total weekly rainfall less than 50mm.

**1.2 High Temperatures**

This section lists stations that recorded average temperatures exceeding 35°C in the last 7 days. Stations recorded average temperatures not exceeding 35°C in the last 7 days.

**1.3 Low Temperatures**

This section lists stations that recorded average temperatures below 10°C in the last 7 days. This is shown in Table 1 below.

**Table 2:**

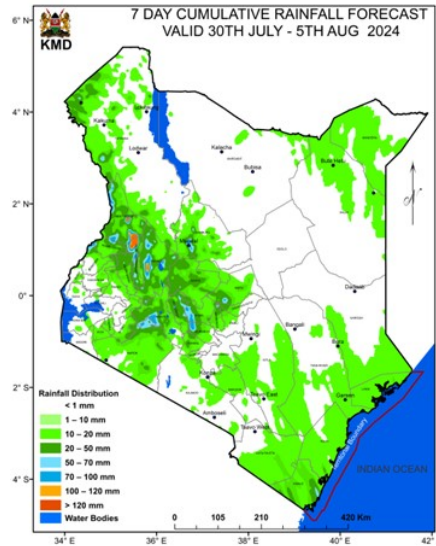
Station	Average weekly minimum temperature
Nyahururu Met	9.6°C

### 1.3 High Winds

This section list stations that recorded winds with speeds of more than 25 knots (12.9 metres per sec) in the last 7 days. This was recorded in Marsabit station.

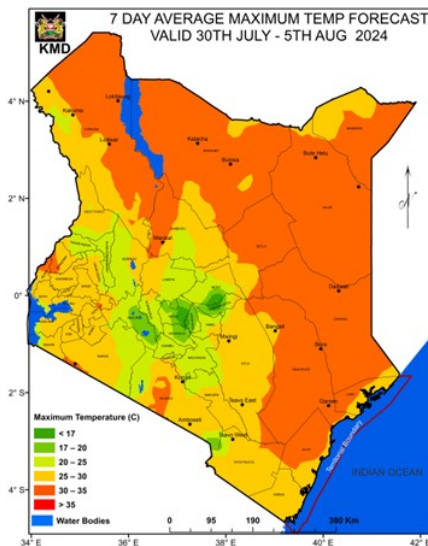
## 2.0 FORECAST FOR 30<sup>TH</sup> JULY, 2024– 5<sup>TH</sup> AUGUST, 2024

### a) Rainfall



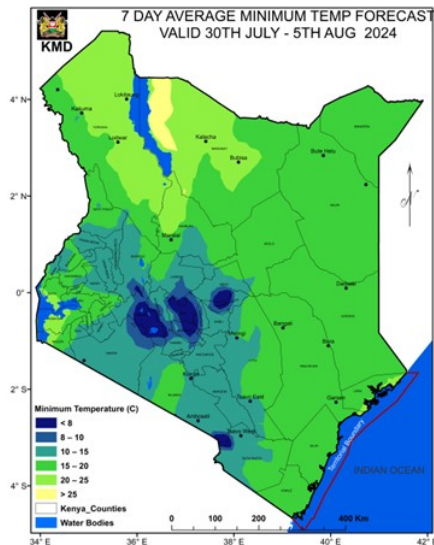
Rainfall amounts exceeding 50mm is expected over parts of West Pokot, Trans Nzoia, Elgeyo Marakwet, Nakuru, and Nyeri counties during the forecast period (Tuesday 30<sup>th</sup> July 2024 to Monday 5<sup>th</sup> August 2024).

### b) High Temperature



Maximum Temperatures not exceeding 35°C is expected over parts of the country during the forecast period (Tuesday 30<sup>th</sup> July 2024 to Monday 5<sup>th</sup> August 2024).

### c) Low Temperature



Minimum temperature of less than 10°C is expected over parts of Nyandarua (Nyahururu), Kajiado, Machakos, Tharaka Nithi, Narok, Meru, Nyeri, Kirinyaga, and Murang'a counties during the forecast period (Tuesday 30<sup>th</sup> July 2024 to Monday 5<sup>th</sup> August 2024).

### d) Winds

Winds of more than 25 knots (12.9m/s) are expected over parts of Turkana (Lodwar), Mandera, Marsabit, Lamu, Wajir, Garissa, Mombasa, Isiolo, and Kilifi (Mtwapa, Malindi, Msabaha) Counties during the forecast period (Tuesday 30<sup>th</sup> July 2024 to Monday 5<sup>th</sup> August 2024).

## 3.0 Advisories

**i) Areas expected to receive more than 50 mm of weekly total rainfall have a high likelihood of occurrence of waterborne diseases (e.g. diarrhoea) and Vector-borne diseases (e.g. Malaria), especially in areas with poor drainage. Residents are advised to be on the lookout for such diseases and take necessary action.**

**ii.) Residents living in areas expected to experience temperatures of more than 35°C have a high risk of being infected with skin diseases e.g. skin rash.**

**iii.) Areas expected to experience less than 10°C have a high likelihood of occurrence of cold weather diseases. e.g. Asthma, pneumonia, common cold and flu. Residents are advised to be on the lookout for such diseases and take necessary action.**

**iv.) Winds of more than 25 knots (12.9m/s).** These winds are strong enough and able to blow dust especially over bare grounds. The blown dust may increase the risk of respiratory infections e.g. Cold and flu diseases. These diseases are quite common during the dry weather conditions. Residents are advised to be on the lookout for such diseases and take necessary protective measures.

**N. B: This forecast is to be used together with the daily (24-hour) forecast issued by this Department.**

Dr. David Gikungu

**DIRECTOR OF KENYA METEOROLOGICAL DEPARTMENT**