



REPUBLIC OF KENYA

**MINISTRY OF ENVIRONMENT, CLIMATE CHANGE AND FORESTRY
KENYA METEOROLOGICAL DEPARTMENT**

Dagoretti Corner, Ngong Road, P. O. Box 30259, 00100 GPO, Nairobi, Kenya
Telephone: 254 (0) 20 3867880-7, **Fax:** 254 (0) 20 3876955/3877373/3867888,
E-mail: director@meteo.go.ke, info@meteo.go.ke; **Website:** <http://www.meteo.go.ke>
Biometeorological Services Division

WEEKLY BIOMETEOROLOGICAL BULLETIN (12TH NOVEMBER –18TH NOVEMBER, 2024)

Ref No: MET/7/58/11-2024

Issue Date: 11/11/2024

1.0 PREAMBLE

Biometeorology is an interdisciplinary science of interactions between atmospheric processes and living organisms - plants, animals and human beings. The Biometeorological Services Division collects, analyzes and interprets Meteorological and Health data in liaison with partners in the Health Sector for advisory development.

The weather information provided is aimed at guiding residents to identify and recognize the likelihood of occurrence of weather-related health diseases according to the issued advisories and take necessary action.

REVIEW FOR LAST WEEK (4TH NOVEMBER, 2024- 10TH NOVEMBER, 2024)

1.1 High Rainfall

This section lists stations recorded more than 50mm total rainfall in the last 7 days. This is shown in Table 1 below.

Table 1:

Station	Total weekly Rainfall
Kitui Met	72.4mm
Meru Met	60.mm
Thika Met	58.6mm
Kangema Met	57.3mm
Embu Met	91.8mm
Kericho Met	63.4mm
Garissa Met	58.1mm
Laikipia Met	60.2mm
Moi Airbase	51.1mm

1.2 High Temperatures

This section lists stations that recorded average temperatures exceeding 35°C in the last 7 days. This is shown in Table 2 below.

Table 2:

Station	Average weekly maximum temperature
Garissa Met	37.0°C
Lodwar Met	36.4°C

1.3 Low Temperatures

This section lists stations that recorded average temperatures below 10°C in the last 7 days. This is shown in Table 3 below.

Table 3:

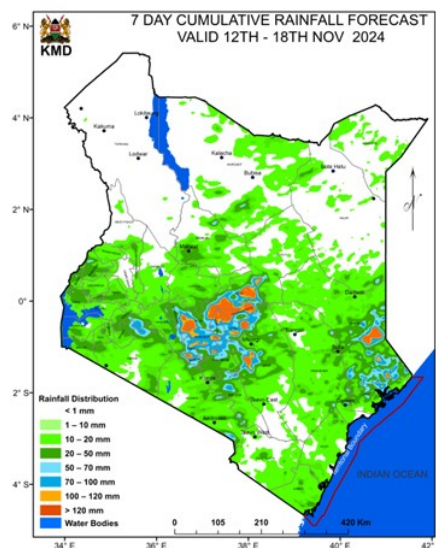
Station	Average weekly minimum temperature
Nyahururu Met	8.5°C

1.4 High Winds

This section list stations that recorded winds with speeds of more than 25 knots (12.9 metres per sec) in the last 7 days. This was recorded in Marsabit station.

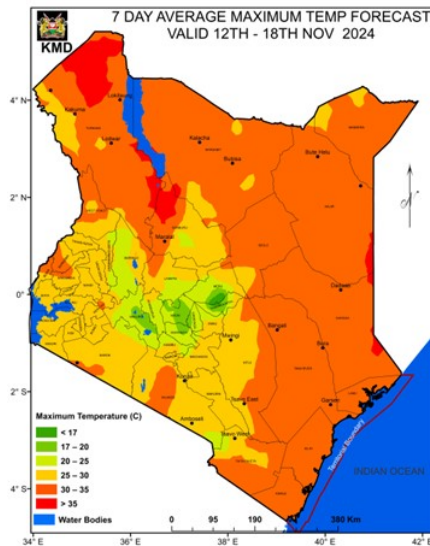
2.0 FORECAST FOR 12TH NOVEMBER, 2024– 18TH NOVEMBER, 2024

a) Rainfall



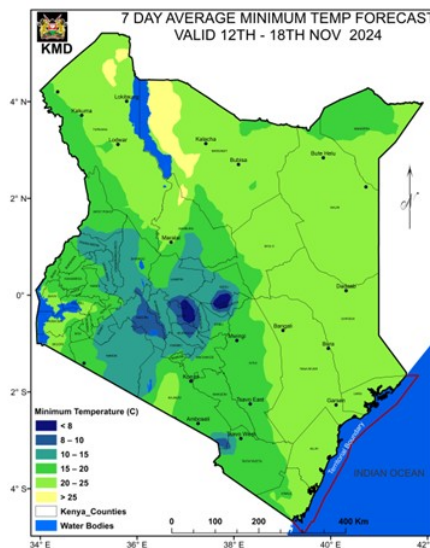
Rainfall amounts exceeding 50mm is expected over parts of Garissa, Lamu, Kiambu, Nyandarua, Murang'a and Nyeri Counties during the forecast period (Tuesday 12th November, 2024 to Monday 18th November, 2024).

b) High Temperature



Maximum Temperatures exceeding 35°C is expected over parts of Mandera, Wajir, Garissa, Isiolo, Samburu, Marsabit and Turkana (Lodwar) counties during the forecast period (Tuesday 12th November, 2024 to Monday 18th November, 2024).

c) Low Temperature



Minimum temperature of less than 10°C is expected over parts of Nyandarua (Nyahururu), Nakuru, Meru, Kirinyaga, Tharaka nithi, Murang'a, Nyeri County during the forecast period (Tuesday 12th November 2024 to Monday 18th November, 2024).

d) Winds

Winds of more than 25 knots (12.9m/s) are expected over parts of Turkana (Lodwar), Mandera, Marsabit, Lamu, Wajir, Garissa, Mombasa, Isiolo and Kilifi (Mtwapa, Malindi and Msabaha) Counties during the forecast period (Tuesday 12th November 2024 to Monday 18th November, 2024).

3.0 Advisories

i) Areas expected to receive more than 50 mm of weekly total rainfall have a high likelihood of occurrence of waterborne diseases (e.g. diarrhea) and Vector borne diseases (e.g. Malaria), especially in areas with poor drainage. Residents are advised to be on the lookout for such diseases and take necessary action.

ii) Residents living in areas expected to experience temperatures of more than 35°C have a high risk of being infected with skin diseases e.g. skin rash.

iii) Areas expected to experience less than 10°C have a high likelihood of occurrence of cold weather diseases. e.g. Asthma, pneumonia, common cold and flu. Residents are advised to be on the lookout for such diseases and take necessary action.

iv) Winds of more than 25 knots (12.9m/s). These winds are strong enough and able to blow dust especially over bare grounds. The blown dust may increase the risk of respiratory infections e.g. Cold and flu diseases. These diseases are quite common during the dry weather conditions. Residents are advised to be on the lookout for such diseases and take necessary protective measures.

N. B: This forecast is to be used together with the daily (24-hour) forecast issued by this Department.

Dr Gikungu

DIRECTOR OF KENYA METEOROLOGICAL DEPARTMENT