



REPUBLIC OF KENYA
MINISTRY OF ENVIRONMENT, CLIMATE CHANGE AND FORESTRY
KENYA METEOROLOGICAL DEPARTMENT

Dagoretti Corner, Ngong Road, P. O. Box 30259, 00100 GPO, Nairobi, Kenya
Telephone: 254 (0) 20 3867880-7, **Fax:** 254 (0) 20 3876955/3877373/3867888,
E-mail: director@meteo.go.ke, info@meteo.go.ke; **Website:** <http://www.meteo.go.ke>
Biometeorological Services Division

WEEKLY BIOMETEOROLOGICAL BULLETIN (26TH NOVEMBER –2ND DECEMBER, 2024)

Ref No: MET/7/58/11-2024

Issue Date: 25/11/2024

1.0 PREAMBLE

Biometeorology is an interdisciplinary science of interactions between atmospheric processes and living organisms - plants, animals and human-beings. The Biometeorological Services Division collects, analyzes and interprets Meteorological and Health data in liaison with partners in the Health Sector for advisory development.

The weather information provided is aimed at guiding residents to identify and recognize the likelihood of occurrence of weather-related health diseases according to the issued advisories and take necessary action.

Summary

Heavy rainfall can cause flooding and water contamination, leading to the water-borne diseases such as cholera and typhoid fever. Mosquitoes and other insects that carry diseases such as dengue fever, malaria and Zika virus thrive in warm and humid conditions, which can be created by heavy rainfall. Rain can lead to increase in respiratory illnesses and pneumonia due to dampness and mold growth.

REVIEW FOR LAST WEEK (18TH NOVEMBER, 2024- 24TH NOVEMBER, 2024)

1.1 High Rainfall

This section lists stations recorded more than 50mm total rainfall in the last 7 days. This is shown in Table 1 below.

Table 1:

Station	Total weekly Rainfall
Kabete Met	214.6mm
Voi Met	145.6mm
Kangema Met	137.9mm
Kakamega Met	136.7mm
Suba Met	132.9mm
Kisumu Met	128.6mm
Thika Met	114.9mm
Wilson Airport	111.1mm
Eldoret Airport	107.2mm

Dagoretti C Met	98.4mm
Ngong Met	85.7mm
Kitale Met	84.2mm
Meru Met	79.3mm
Kericho Met	74.9mm
Makindu Met	72.9mm
Nyahururu Met	71.9mm
Eldoret Met	68.6mm
Msabaha Met	63.1mm
Narok Met	56.4mm

1.2 High Temperatures

This section lists stations that recorded average temperatures exceeding 35°C in the last 7 days. The stations recorded average temperatures not exceeding 35°C

1.3 Low Temperatures

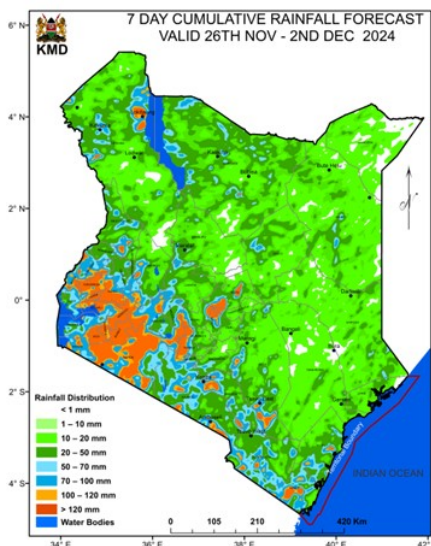
This section lists stations that recorded average temperatures below 10°C in the last 7 days. . The stations recorded average temperatures exceeding 10°C

1.4 High Winds

This section list stations that recorded winds with speeds of more than 25 knots (12.9 metres per sec) in the last 7 days. This was recorded in Marsabit station.

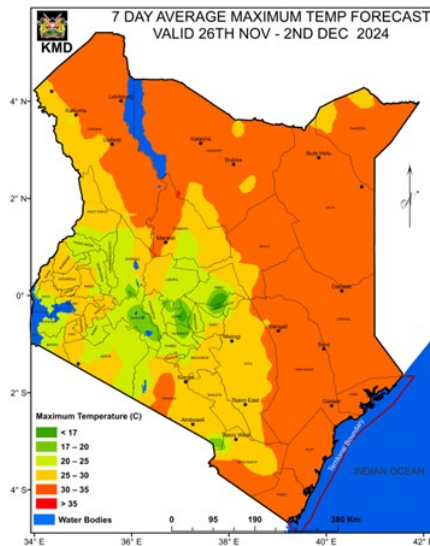
2.0 FORECAST FOR 26TH NOVEMBER, 2024– 2ND DECEMBER, 2024

a) Rainfall



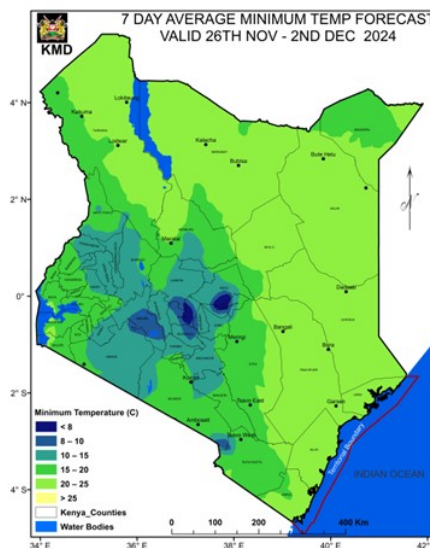
Rainfall amounts exceeding 50mm is expected over parts of Kakamega, Busia, Kisumu, Nakuru, Bungoma, Nyeri, Kiambu, Nyamira, Kericho, Uasin Gishu, Migori, Murang'a, Kisii, Narok and Nyandarua Counties during the forecast period (Tuesday 26th November, 2024 to Monday 2nd December, 2024).

b) High Temperature



Maximum Temperatures not exceeding 35°C is expected over parts of the country during the forecast period (Tuesday 26th November, 2024 to Monday 2nd December, 2024).

c) Low Temperature



Minimum temperature of less than 10°C is expected over parts of Nyandarua (Nyahururu), Nakuru, Meru (Mt Kenya), Kirinyaga, Murang'a and Nyeri Counties during the forecast period (Tuesday 26th November 2024 to Monday 2nd December, 2024).

d) Winds

Winds of less than 25 knots (12.9m/s) are expected over parts of Country during the forecast period (Tuesday 26th November 2024 to Monday 2nd December, 2024).

3.0 Advisories

i) Areas expected to receive more than 50 mm of weekly total rainfall have a high likelihood of occurrence of waterborne diseases (e.g. diarrhea) and Vector borne diseases (e.g. Malaria), especially in areas with poor drainage. Residents are advised to be on the lookout for such diseases and take necessary action.

ii) Residents living in areas expected to experience temperatures of more than 35°C have a high risk of being infected with skin diseases e.g. skin rash.

iii) Areas expected to experience less than 10°C have a high likelihood of occurrence of cold weather diseases. e.g. Asthma, pneumonia, common cold and flu. Residents are advised to be on the lookout for such diseases and take necessary action.

iv) Winds of more than 25 knots (12.9m/s). These winds are strong enough and able to blow dust especially over bare grounds. The blown dust may increase the risk of respiratory infections e.g. Cold and flu diseases. These diseases are quite common during the dry weather conditions. Residents are advised to be on the lookout for such diseases and take necessary protective measures.

N. B: This forecast is to be used together with the daily (24-hour) forecast issued by this Department.

Dr Gikungu

DIRECTOR OF KENYA METEOROLOGICAL DEPARTMENT